

EXCHANGE OF GEO-SPATIAL DATA THROUGH GEO-WEB

Abstract

Applications for the web, desktop, and mobile are made using the Arc-GIS server. Arc-GIS for server offers end users apps and services for managing, visualising, and analysing geographical data.

The proposed work deal with sharing of GIS data to any user using the provision of Arc-GIS server. It provides the facility of publishing Arc-map data in the global server and local server which facilitates user to share and access the Geo spatial data i.e vector data and Raster data.

Intelligent online maps offer a distinctive method of viewing complex data. They assist you in mining large datasets, uncovering hidden patterns, and pounding up seemingly unconnected facts. Using Arc-GIS server Online, data may be created on a desktop, transferred to the cloud, and shared.

Keywords: Arc-GIS Server, Raster Data, Vector Data.

Authors

Ballu Harish

Research Scientist
NRSC RRSC Hyderabad
Employee Code NR08270
harishballu111@gmail.com

Dr. R S Dwiwedi

Retd Group Director
NRSC Hyderabad
rsdwiwedi51@gmail.com

I. INTRODUCTION

The main server for Esri's Geographic Information System (GIS) is called ArcGIS Server. Create and manage GIS Web services, applications, and data using ArcGIS Server. ArcGIS Server is often installed either on-premises in the service-oriented architecture (SOA) of the enterprise, off-premises in a cloud computing environment, or both.

A complete and integrated server GIS is Arc-GIS server. It lets users to share tools, models, and maps with people inside and outside of their company in a way that works well for their workflows.

1. With Arc-GIS Server, user can:

- With real-time Geo-intelligence, publish quick, insightful Web maps that are suited to your audience, significantly enhancing business and resource decisions.
- Geographically enabling IT investments, reducing data and application redundancy, enhancing system setups, and consolidating enterprise systems.
- Manages geodata centrally, improving data security and integrity for the majority of key information assets.
- Simplify access to massive amounts of picture resources, significantly lowering the need for storage and data processing.
- Make Geographic Information System (GIS) technology available to your mobile workforce to improve resource and event management, asset monitoring, and field data gathering projects' accuracy and value.
- The client needs GIS in order to view a property on a map, analyse demographic data, and conduct a business analysis.

2. Using Arc-GIS server user can:

- **Create Web Mapping Application:** Constructing and overseeing browser-based tools for GIS data viewing, querying, and editing No prior programming experience is necessary. Both the Advanced and Standard editions of ArcGIS Server come with the programme.
- **Create Custom Web Applications:** Using JavaScript, Adobe Dreamweaver,.NET, or Java, create sophisticated interactive apps on top of ArcGIS Server.

3. Arc-GIS Server Supports a Wide Range of Applications:

- Arc-GIS Online: Using the Web to access and share data, maps, tools, and services.
- Mobile: Designing and overseeing mobile initiatives that function both while connected and when they are not in order to continue collecting and editing data. With the Advanced edition of ArcGIS Server, this is included in the box.
- Arc-GIS Desktop: Creating, enhancing, and utilising spatial analysis tools, map services, and GIS data.

- Arc-GIS Explorer is a tool for accessing, arranging, and displaying 2D and 3D GIS map services, tools for spatial analysis, and online content like Arc-GISSM. You can get this for free.
- Arc-GIS for AutoCAD: Provides access to vector, raster, and
- Image services for AutoCAD users. You can get this for free.

Who Uses Arc-GIS Server: Arc-GIS Server Delivers Centralized Geographic Intelligence to Anyone, Anywhere

- GIS experts: GIS experts manage and disseminate GIS content, such as maps, globes, imagery, and geo-processing models, across organisational boundaries to mobile and information workers, as well as Web users and application developers. They do this by using Arc-GIS Server.
- Database administrators: They utilise Arc-GIS Server to provide centralised, scalable geodata storage space, advance geodata security and dependability, and provide multiuser access and editing capabilities to Web, desktop, and mobile users.
- Application developers: Arc-GIS Server Application Programming Interfaces (APIs) are used by application developers to create and deploy sophisticated interactive Web mapping applications that can adhere to various geospatial, IT, and defence interoperability requirements.
- IT administrators: Arc-GIS server is used by IT administrators to automate work, modernise corporate processes, boost productivity, and manage GIS Web services and applications within a service-oriented architecture (SOA).
- Information workers: Information professionals employ Arc-GIS Server apps and services to generate reports and analytic maps, access authoritative data and processes, and enhance workflows and customer service.
- Mobile workers: Arc-GIS Server is used by mobile workers to access and use mobile maps, track the location of assets, and gather, modify, and update GIS data.
- Web citizens: Web users utilise Arc-GIS Server apps and services to view public data, provide their own maps, share comments, images, and other information, and take part in local, regional, and international decision-making.

4. Arc-GIS Server Extensions:

- It is used for adding More Capabilities and Share Your Desktop Models and Tools with the Extensions.
- 3D: examining what can be observed from various observation sites, subsurface features, and atmospheric occurrences, and visualising the best location for a facility.

- **Geostatistical:** Create statistically sound surfaces and more accurate forecasts by sharing model subsurface features, scientific models, and surface exploration approaches.
- **Network:** Create a realistic network model that includes features like multipoint routing, drive times, service area definition, best routes, and analysis of the closest facilities.
- **Spatial:** Using integrated raster and vector analysis, spatially generate new surfaces, forecast expected outcomes, identify model alternatives, and determine appropriate locations.
- **Image:** Enable on-the-fly processing and active mosaicking for a lot of photos. Make your imagery's complete information content accessible.
- **Data Interoperability:** Use spatial extract, transform, and load (ETL) capabilities to access and comprehend hundreds of different data formats.
- **Schematics:** Creating, viewing, and modifying diagrams that are kept in a geodatabase, as well as updating and sharing many network diagrams in a single layer, are all examples of schematics.
- **Job tracking:** administer project tracking and workflow management solutions to advance the proficiency of any multiuser GIS project.
- **Geo-portal:** Quick, dependable access to a variety of dynamic geospatial resources is provided via geoportals, which also support OGC specification standards, ISO 19139, FGDC metadata, and Dublin Core metadata.

5. ArcGIS Server Key Features

- **Data management:** Offers a framework and tools for handling massive spatial datasets in an RDBMS such as IBM® DB2®, Oracle®, IBM Informix®, PostgreSQL, and Microsoft SQL Server® as well as geo-data services for data replication, extraction, and management.
- **GIS web services:** Supports a variety of Web services, including geoprocessing, WMS, KML, WCS, WFS, and WFS-T.
- **Mapping:** Include tools for building feature-rich browser-based Web mapping applications.
- **Spatial analysis:** Supports scripts, models, and tools for server-based analysis and geoprocessing, including raster, vector, and network analytics.
- **Publishing to clients:** supports several different clients, such as ArcGIS Explorer, ArcGIS Desktop, AutoCAD, and browser-based and mobile apps.

- Image management: Supports a full image management system for delivering massive amounts of images that can be viewed in clients for mobile, desktop, the Web, and imaging.
- Web application functionality: Enables the building of Web mapping apps using a straightforward wizard with no coding needed.
- Application developer tools: Provides a full development environment for the Java platform and the Microsoft.NET Framework, as well as APIs for Adobe Flex, JavaScript, and Microsoft Silverlight for building sophisticated interactive applications.
- Spatial web editing functionality: Editing of map characteristics and features in web applications is supported by the spatial web editing functionality.
- Advanced Spatial Analysis: Supports complex geographic and statistical analyses using the free to use Geostatistical, 3D, Network, and Spatial extensions.
- Mobile GIS application functionality: Offers customizable mobile applications that let a mobile workforce dynamically query and update data as well as access server data remotely. These applications are managed by Arc-GIS Server, coupled with GPS, and easily fit into enterprise IT settings.
- Mobile application developer tools: Offers software developer kits (SDKs) and other management and setup tools for managing and configuring unique mobile applications.

II. LITERATURE REVIEW

All facets of disaster management—response, preparation, recovery, and mitigation—require geographic data and tools. Recently, a credible alternative to traditional information from mapping agencies and companies has emerged: geographic information created by leisure individuals, often known as volunteered geographic information.

Since volunteered information is unassured and without any of the guarantees that promote trust in data that is formally created, data quality is a key challenge. When there is an emergency, time is of the essence, and the dangers of using information that has been provided voluntarily are frequently exceeded by the advantages of doing so (Goodchild et al., 2010). Individuals are now able to build global-patch works of geographic information thanks to the rise in interest in gathering, creating, and disseminating geographic information on the web through sites like Wikimedia and open-street map (Michael F, Goodchild 2007).

Using the Geospatial Web, connecting with like-minded people in productive groups, and communicating across organisations. Geo-browsers like Google Earth and NASA World Wind are the enabling technology for the Geospatial Web. The development and consumption of media products are changing as a result of these three-dimensional platforms. They not only connect users with shared interests and browsing habits, but they also make the

geographic distribution of Web services and resources visible (Scharl, A. and Tochtermann, K. 2007).

Geospatial information and tools have the ability to save lives, reduce property damage, and lower disaster response costs in all facets of emergency management. Any technology's success depends equally on the human systems it is integrated into and the technology itself (National Research Council. 2007).

The development of the service-based GIS model is a result of the Open GIS Consortium's (OGC) concerted efforts to provide funding for the consensus-based creation of interoperable GIS Web service interfaces, as well as improvements in general Web service technology. For use in a range of client applications, it is possible to dynamically collect data from numerous GIS Web services.

Geographical information can be published and disseminated within organisations, across organisational boundaries, and to the general public using the server-based platform provided by ESRI. The main server GIS software from ESRI is Arc-GIS Server. It is a full-featured, integrated server-based GIS that offers end-user apps and services for managing, visualising, and analysing spatial data right out of the box.(The International Archives of the Spatial Information Sciences, Photogrammetry, Remote Sensing and LIU Laixing,2008).

By creating unique web services, Arc-GIS Server, the online application solution from ESRI, can be improved. Arc-GIS Desktop, rich Internet applications like the Arc-GIS API for Microsoft Silver light/WPF, and web applications like the web Application Development Framework (ADF) for Java / Microsoft.NET and Server Object Extensions offered by ESRI are just a few examples of client applications and developer frameworks and APIs that can be used to access Arc-GIS server services. Additionally, Arc-GIS Server offers a broad range of standards-based APIs that enable practically every client application to interact with and utilise Arc-GIS Server's mapping, spatial analysis, and data management features (12th Esri India User Conference, 2011)

Arc-GIS is a piece of general-purpose GIS software created by ESRI. It is a comprehensive piece of software for creating functional GIS. A set of out-of-the-box applications for creating, manipulating, editing, analysing mapping, and disseminating geographic information; a geographic information form for modelling aspects of the real world; and a collection of web services that provide content and capabilities to networked software clients are the four software parts that make up Arc-GIS. The Arc-GIS software system can be installed in parts on laptops, smartphones, desktop PCs, and servers. From the perspective of the end user, Arc-GIS offers a very broad range of capability that is condensed into a standard collection of menu-driven GIS apps that execute essential geographic workflows. The applications deal with geographic data formation (Encyclopedia of GIS, David J. Maguire, 2008)

Asia is now known for its biodiversity shifts, where the world's greatest biodiversity loss is seen (Yahara, 2009). Asia has developed a network of biodiversity research due to the availability of study areas for conducting integrative elucidation. Japan, Indonesia, and Cambodia are home to significant biodiversity observations.

Rigid observations are being made at these locations in the cooperation of the public, scientific, and citizen sectors. In order to define interconnections and interdependencies in research and to increase global responsiveness, coordinated tactics created by consuming information and integrating data are essential. The goal of the research in this area is to expand the Geographic Information System (GIS)-based server system database in order to enhance internal workflows at field interpretation and to more quickly share updated information on biodiversity surveillance data. The study concerns in the biodiversity information via GIS classification are first presented in this work. Second, a proposal is made to use a GIS portal to integrate data seamlessly across the entire biodiversity information system. Third, the Arc-GIS server and Microsoft Visual Studio 2008 are combined to create the GIS server structure programme, which serves as the system's core. Finally, a case study of a biodiversity observation field is currently constructed for sharing, producing, and exploiting biodiversity information, at the existing research outcomes, to verify the proficiency of the GIS server system application. (AASRI Conference on Computational Intelligence and Bioinformatics, Ibrahim Djameluddin ,2012)

1. Statement of the problem

- Sharing Geo-Spatial data is vital and difficult task using Current technology.
- Sharing information across national government and among users is not easier with in stipulated time.
- Existing hub facility for accessing geo-spatial data is not easier task.

2. Project objectives

The objectives of the work is

- Accessing the Geo-Spatial data from ESRI Arc-GIS server using different services like Map service, Feature service, Image service, etc..
- Displaying the details of Geo-Spatial data using the service Popup Template.
- Publishing the Geospatial data to Arc-GIS server Environment.

3. Methodology

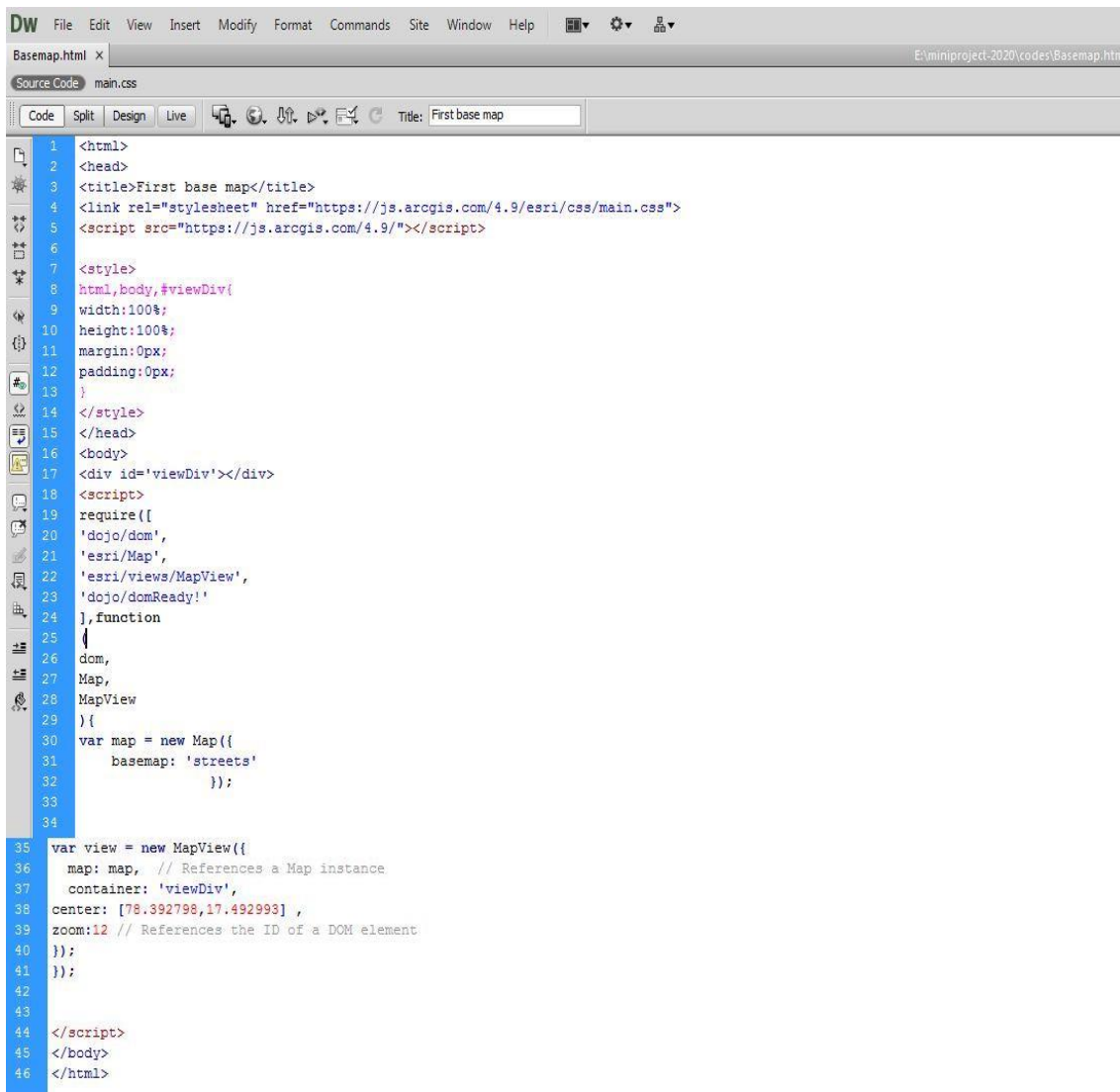
- using the website to insert the Base map
- To design the web pages using style-sheets of different techniques and using Dojo Toolkit for placing events.
- Creation of Map view environment for viewing of Geo-Spatial data using various services like Map service, Feature service.
- Creation of Rendering tools for customising vector data
- Generation of Query Task for providing information of vector data using pop up template
- Placing the widgets for knowing the information of Geo-Spatial data.
- Providing various Toggles for different view of spatial data.
- Publishing Geo Spatial data in server.

4. Work flow of the project

Accessing the webpage for placing the Base map: We are utilizing the Base-map attribute to display the base map on the HTML page. Different values for the Base-Map attribute include topo, streets, satellite, hybrid, dark-gray, gray, national-geographic, etc. For the base-map property, we can choose any value based on our dependencies. After that, we can display the base map by using the Map-view property. Additionally, the map-view has features like animation, background, container, center, zoom, navigation, and more. We can choose the necessary properties based on our requirements.

It is available under “**esri/Map**” for displaying the map we need view it is available under ” **esri/views/MapView**”.

Sample code for Base-Map and Map-view:



```
1 <html>
2 <head>
3 <title>First base map</title>
4 <link rel="stylesheet" href="https://js.arcgis.com/4.9/esri/css/main.css">
5 <script src="https://js.arcgis.com/4.9/"></script>
6
7 <style>
8 html,body,#viewDiv{
9 width:100%;
10 height:100%;
11 margin:0px;
12 padding:0px;
13 }
14 </style>
15 </head>
16 <body>
17 <div id='viewDiv'></div>
18 <script>
19 require([
20 'dojo/dom',
21 'esri/Map',
22 'esri/views/MapView',
23 'dojo/domReady!'
24 ],function
25 |
26 dom,
27 Map,
28 MapView
29 ){
30 var map = new Map({
31 basemap: 'streets'
32 });
33
34
35 var view = new MapView({
36 map: map, // References a Map instance
37 container: 'viewDiv',
38 center: [78.392798,17.492993] ,
39 zoom:12 // References the ID of a DOM element
40 });
41 });
42
43
44 </script>
45 </body>
46 </html>
```

Figure 1: Code1: Base-map code.

Figure 1 in the results section displays the above code's output. The Center property receives the values for Latitude and Longitude. I've provided the latitude and longitude values for a region of Hyderabad in this code (code-1). As a result, their work will become more focused.

5. Designing of the web pages using style-sheets and Dojo Toolkit for placing events: Using CSS, web page design is accomplished. The term CSS stands for Cascading Style Sheets. CSS explains how HTML elements should appear on a screen, in print, or in other media. A lot of work is saved via CSS. It can simultaneously control the layout of several web pages.

Designing of style sheets is done using three different ways:

- Inline style sheet
- Internal style sheet
- External style sheet

Inline style sheet: Inline CSS is a type of style sheet that includes CSS properties in the body of an element that is attached to it. Using the style attribute, this form of style is specific within an HTML tag.

Internal style sheet: When only one HTML document needs to be styled differently, this can be utilized. The head section of the HTML file contains the CSS rule, which means that the CSS is set within the HTML file.

External style sheet: With the use of the tag attribute, external CSS contains divided CSS files that only contain style properties (for example, class, id, header,... etc.). CSS property should be linked to the HTML document using a link tag and written in a separate file with the extension ".css."

This means that for each element, style can be put only once and that will be useful across web pages.

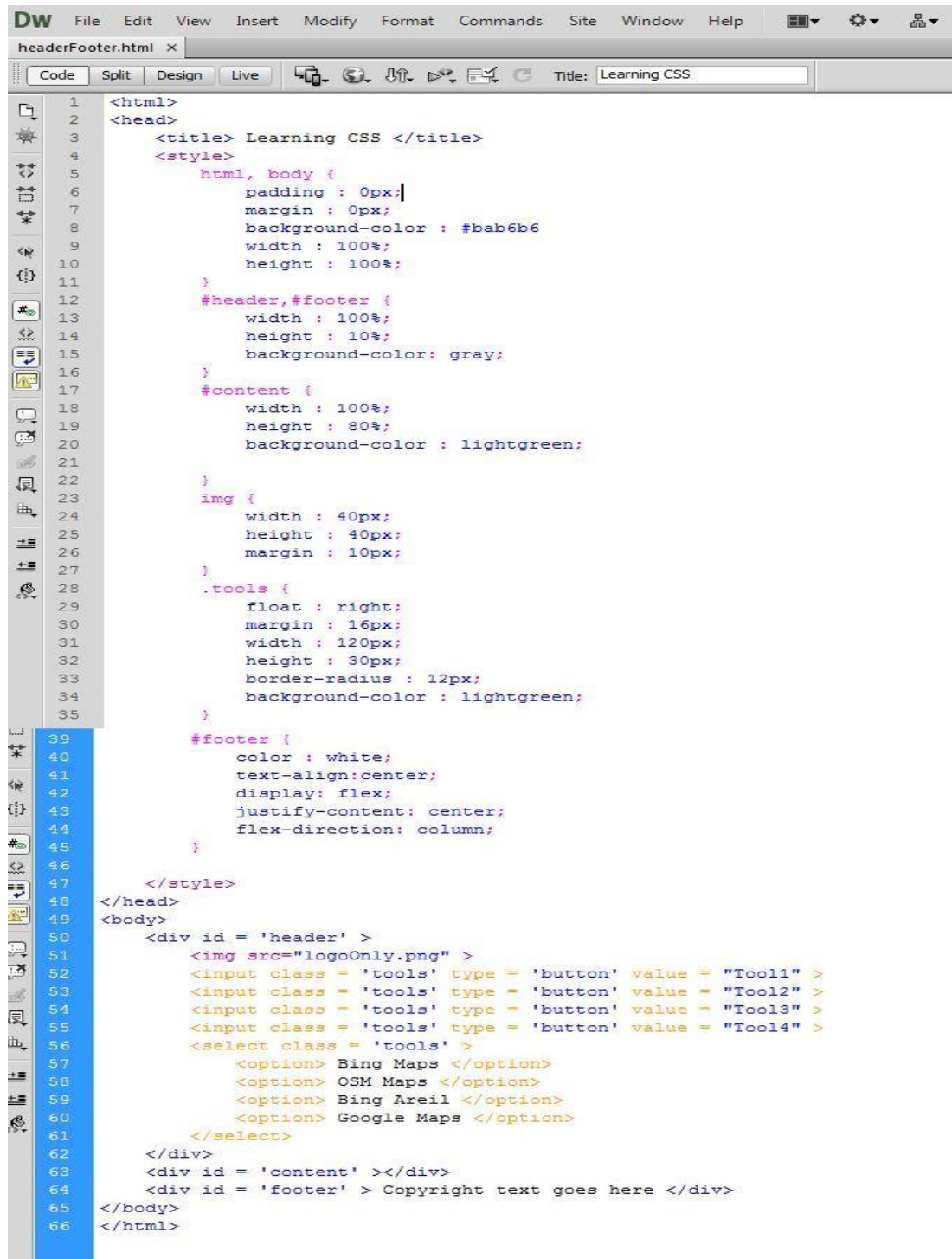
The manual entry of code by the programmer is required by the CSS ideas, and it takes longer when customized. Therefore, in order to customize in less time, we switch to the Dojo toolkit, which comes with built-in style code. By using it, we can reduce the amount of programming required to style the web pages.

Dojo Tool-Kit: The Dojo toolkit includes a Java-Script library that is designed to make it simple to build cross-platform JavaScript and Ajax-based websites. By employing the web standards themselves as the platform, it attempts to cut down on time and scale the advancement approach.

It can be used in two different ways

- Using CDN i.e by downloading the dojo in the local system it can be used in our personnel system directly.
- Using its API it can be accessed from the web environment of Dojo.

Sample code for CSS:



```
1 <html>
2 <head>
3 <title> Learning CSS </title>
4 <style>
5     html, body {
6         padding : 0px;
7         margin : 0px;
8         background-color : #bab6b6
9         width : 100%;
10        height : 100%;
11    }
12    #header,#footer {
13        width : 100%;
14        height : 10%;
15        background-color: gray;
16    }
17    #content {
18        width : 100%;
19        height : 80%;
20        background-color : lightgreen;
21    }
22    }
23    img {
24        width : 40px;
25        height : 40px;
26        margin : 10px;
27    }
28    .tools {
29        float : right;
30        margin : 16px;
31        width : 120px;
32        height : 30px;
33        border-radius : 12px;
34        background-color : lightgreen;
35    }
36    }
37    #footer {
38        color : white;
39        text-align:center;
40        display: flex;
41        justify-content: center;
42        flex-direction: column;
43    }
44    }
45 </style>
46 </head>
47 <body>
48 <div id = 'header' >
49 
50 <input class = 'tools' type = 'button' value = "Tool1" >
51 <input class = 'tools' type = 'button' value = "Tool2" >
52 <input class = 'tools' type = 'button' value = "Tool3" >
53 <input class = 'tools' type = 'button' value = "Tool4" >
54 <select class = 'tools' >
55 <option> Bing Maps </option>
56 <option> OSM Maps </option>
57 <option> Bing Areil </option>
58 <option> Google Maps </option>
59 </select>
60 </div>
61 <div id = 'content' ></div>
62 <div id = 'footer' > Copyright text goes here </div>
63 </body>
64 </html>
```

Figure 2: Code2: CSS code.

The output of the code is shown in result section with figure 2. This code (code-2) completely deals with styling of web page .various properties of css is used in the code on the dependency of output.

Sample code of Dojo:

```
<html>
<head>
  <title> DOJO Title Pane </title>
  <script src="https://ajax.googleapis.com/ajax/libs/dojo/1.13.0/dojo/dojo.js"></script>
  <link rel="stylesheet" href="http://ajax.googleapis.com/ajax/libs/dojo/1.13.0/dijit/themes/claro/claro.css">
  <style>

    html,body,#layContainer {
      width:100%;
      height: 100%;
      margin:0px;
      padding:0px;
    }
    #tpContainer {
      width : 300px;
      height : 200px;
      top:20px;
      right:20px;
      position:absolute;
      z-index : 9999;
    }
    #cpHeader,#cpFooter {
      height: 10%;
      background-color:gray;
    }
    #cpContent {
      height : 80%;
      background-color : lightBlue;
    }
    #cpLeft {
      width:300px;
      background-color:red;
    }
  </style>

  <div id='layContainer' data-dojo-type='dijit/layout/LayoutContainer' data-dojo-props="design:'headLine'" >
    <div id='cpHeader' data-dojo-type='dijit/layout/ContentPane' data-dojo-props="region:'top'" >
    </div>

    <div id='cpLeft' data-dojo-type='dijit/layout/ContentPane' data-dojo-props="region:'left'">
    </div>

    <div id='cpContent' data-dojo-type='dijit/layout/ContentPane' data-dojo-props="region:'center'">
      <div id='tpContainer' >
        <div id='tPane' data-dojo-type="dijit/TitlePane" data-dojo-props="title:'This is the title', open:false" >
          <div id='lyrName' data-dojo-type='dijit/form/TextBox' ></div>
          <div id='btnOK' data-dojo-type='dijit/form/Button' >OK</div>
        </div>
      </div>
    </div>
    <div id='cpFooter' data-dojo-type='dijit/layout/ContentPane' data-dojo-props="region:'bottom'">
    </div>

  </div>

  <script>
    require([
      'dojo/dom',
      'dojo/on',
      'dijit/registry',
      'dojo/parser',
      'dojo/domReady!'
    ], function(
      dom,
      on,
      registry,
      parser
    ){
      parser.parse().then( function(){
        /*
          on(dom.byId('btnOK'), 'click', function(){
            alert('Clicked');
          });
          */
          registry.byId('btnOK').on('click',function(){
            alert(dom.byId('lyrName').value);
          });
        });
      });
    </script>
  </body>
</html>
```

Figure 3: Code3: DOJO- code.

The output of the code is shown in result section with figure 3. This code (code-3) completely deals with styling of web page using the available tools of Dojo toolkit. Here in the code some of the properties of Dojo like Title-Pane, Content-Pane, Text box, Buttons have been used. If the creation of the mentioned properties need to be done .Without Dojo concept we need manually write hundreds line of code where as above programme contains only ninty lines of code i.e Three fourth of the code is reduced in the programme.

In the above code (code-3) tags like script and link have been used which will contain the predefined code of Dojo because of the two tags only coding effort got reduced in the programme.

- 6. Displaying the Services in Map view environment:** Numerous services, including map services, feature services, image services, geoprocessing services, and geocoding services, are easily accessible.

Map Services are the equivalent of an Arc-Map.mxd file.

One map service is made up of many Feature services.

A feature service is one that focuses on a single feature, such as a point, line, or polygon.

Raster data, such as topographical sheets and satellite images, are focused using image services.

For publishing tools that are already in existence or tools that users have just generated, geoprocessing services are used.

Geo-Coding services provide addresses when x, y, and z are known.

- 7. Map Image Layer and Feature Layer:** It is available under

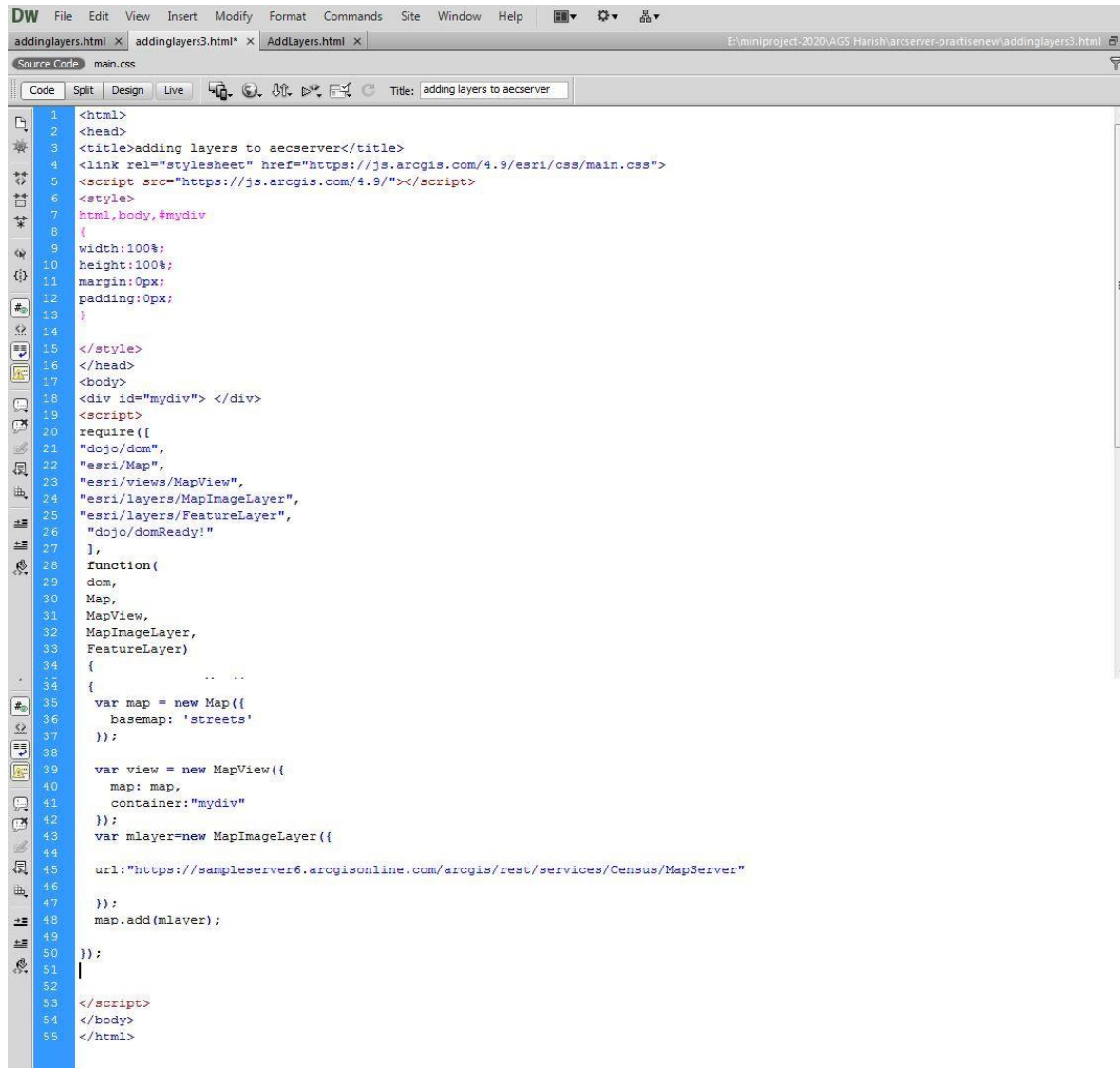
- "esri/layers/MapImageLayer" and
- "esri/ layers/FeatureLayer " API reference.

The ability to examine data from defined sublayers in a map service and export images rather than features is provided by the map image layer. Based on a demand that comprises a bounding box, LOD (level of detail), dpi, spatial reference, and other variables, map service images are quickly created on the server. The complete map extent defined in the produced image.

A Map Service or Feature Service, Arc-GIS Online or Arc-GIS Enterprise portal entries, or a variety of client-side descriptions can all be used to produce a single layer known as a Feature Layer. The layer may be spatial or non-spatial (such as a table) (have geographic features) Each discrete feature in a spatial layer has a geometry that enables it to be shown as a graphic with a spatial framework in either a 2D map view or a 3D scene view. Additionally, features have data attributes that give additional details about the features in real life that it represents. These attributes can be examined in pop-up

windows and are utilized to render the layer. For the purpose of visualizing data in a spatial context, feature layers can be evaluated, queried, and rendered.

Sample code of Map Image layer:



```
1 <html>
2 <head>
3 <title>adding layers to aecserver</title>
4 <link rel="stylesheet" href="https://js.arcgis.com/4.9/esri/css/main.css">
5 <script src="https://js.arcgis.com/4.9/"></script>
6 <style>
7 html,body,#mydiv
8 {
9 width:100%;
10 height:100%;
11 margin:0px;
12 padding:0px;
13 }
14
15 </style>
16 </head>
17 <body>
18 <div id="mydiv"> </div>
19 <script>
20 require([
21 "dojo/dom",
22 "esri/Map",
23 "esri/views/MapView",
24 "esri/layers/MapImageLayer",
25 "esri/layers/FeatureLayer",
26 "dojo/domReady!"
27 ],
28 function(
29 dom,
30 Map,
31 MapView,
32 MapImageLayer,
33 FeatureLayer)
34 {
35
36
37
38
39
40
41
42
43
44
45
46
47
48
49
50
51
52
53
54
55
56
57
58
59
60
61
62
63
64
65
66
67
68
69
70
71
72
73
74
75
76
77
78
79
80
81
82
83
84
85
86
87
88
89
90
91
92
93
94
95
96
97
98
99
100
101
102
103
104
105
106
107
108
109
110
111
112
113
114
115
116
117
118
119
120
121
122
123
124
125
126
127
128
129
130
131
132
133
134
135
136
137
138
139
140
141
142
143
144
145
146
147
148
149
150
151
152
153
154
155
156
157
158
159
160
161
162
163
164
165
166
167
168
169
170
171
172
173
174
175
176
177
178
179
180
181
182
183
184
185
186
187
188
189
190
191
192
193
194
195
196
197
198
199
200
201
202
203
204
205
206
207
208
209
210
211
212
213
214
215
216
217
218
219
220
221
222
223
224
225
226
227
228
229
230
231
232
233
234
235
236
237
238
239
240
241
242
243
244
245
246
247
248
249
250
251
252
253
254
255
256
257
258
259
260
261
262
263
264
265
266
267
268
269
270
271
272
273
274
275
276
277
278
279
280
281
282
283
284
285
286
287
288
289
290
291
292
293
294
295
296
297
298
299
300
301
302
303
304
305
306
307
308
309
310
311
312
313
314
315
316
317
318
319
320
321
322
323
324
325
326
327
328
329
330
331
332
333
334
335
336
337
338
339
340
341
342
343
344
345
346
347
348
349
350
351
352
353
354
355
356
357
358
359
360
361
362
363
364
365
366
367
368
369
370
371
372
373
374
375
376
377
378
379
380
381
382
383
384
385
386
387
388
389
390
391
392
393
394
395
396
397
398
399
400
401
402
403
404
405
406
407
408
409
410
411
412
413
414
415
416
417
418
419
420
421
422
423
424
425
426
427
428
429
430
431
432
433
434
435
436
437
438
439
440
441
442
443
444
445
446
447
448
449
450
451
452
453
454
455
456
457
458
459
460
461
462
463
464
465
466
467
468
469
470
471
472
473
474
475
476
477
478
479
480
481
482
483
484
485
486
487
488
489
490
491
492
493
494
495
496
497
498
499
500
501
502
503
504
505
506
507
508
509
510
511
512
513
514
515
516
517
518
519
520
521
522
523
524
525
526
527
528
529
530
531
532
533
534
535
536
537
538
539
540
541
542
543
544
545
546
547
548
549
550
551
552
553
554
555
556
557
558
559
560
561
562
563
564
565
566
567
568
569
570
571
572
573
574
575
576
577
578
579
580
581
582
583
584
585
586
587
588
589
590
591
592
593
594
595
596
597
598
599
600
601
602
603
604
605
606
607
608
609
610
611
612
613
614
615
616
617
618
619
620
621
622
623
624
625
626
627
628
629
630
631
632
633
634
635
636
637
638
639
640
641
642
643
644
645
646
647
648
649
650
651
652
653
654
655
656
657
658
659
660
661
662
663
664
665
666
667
668
669
670
671
672
673
674
675
676
677
678
679
680
681
682
683
684
685
686
687
688
689
690
691
692
693
694
695
696
697
698
699
700
701
702
703
704
705
706
707
708
709
710
711
712
713
714
715
716
717
718
719
720
721
722
723
724
725
726
727
728
729
730
731
732
733
734
735
736
737
738
739
740
741
742
743
744
745
746
747
748
749
750
751
752
753
754
755
756
757
758
759
760
761
762
763
764
765
766
767
768
769
770
771
772
773
774
775
776
777
778
779
780
781
782
783
784
785
786
787
788
789
790
791
792
793
794
795
796
797
798
799
800
801
802
803
804
805
806
807
808
809
810
811
812
813
814
815
816
817
818
819
820
821
822
823
824
825
826
827
828
829
830
831
832
833
834
835
836
837
838
839
840
841
842
843
844
845
846
847
848
849
850
851
852
853
854
855
856
857
858
859
860
861
862
863
864
865
866
867
868
869
870
871
872
873
874
875
876
877
878
879
880
881
882
883
884
885
886
887
888
889
890
891
892
893
894
895
896
897
898
899
900
901
902
903
904
905
906
907
908
909
910
911
912
913
914
915
916
917
918
919
920
921
922
923
924
925
926
927
928
929
930
931
932
933
934
935
936
937
938
939
940
941
942
943
944
945
946
947
948
949
950
951
952
953
954
955
956
957
958
959
960
961
962
963
964
965
966
967
968
969
970
971
972
973
974
975
976
977
978
979
980
981
982
983
984
985
986
987
988
989
990
991
992
993
994
995
996
997
998
999
1000
1001
1002
1003
1004
1005
1006
1007
1008
1009
1010
1011
1012
1013
1014
1015
1016
1017
1018
1019
1020
1021
1022
1023
1024
1025
1026
1027
1028
1029
1030
1031
1032
1033
1034
1035
1036
1037
1038
1039
1040
1041
1042
1043
1044
1045
1046
1047
1048
1049
1050
1051
1052
1053
1054
1055
1056
1057
1058
1059
1060
1061
1062
1063
1064
1065
1066
1067
1068
1069
1070
1071
1072
1073
1074
1075
1076
1077
1078
1079
1080
1081
1082
1083
1084
1085
1086
1087
1088
1089
1090
1091
1092
1093
1094
1095
1096
1097
1098
1099
1100
1101
1102
1103
1104
1105
1106
1107
1108
1109
1110
1111
1112
1113
1114
1115
1116
1117
1118
1119
1120
1121
1122
1123
1124
1125
1126
1127
1128
1129
1130
1131
1132
1133
1134
1135
1136
1137
1138
1139
1140
1141
1142
1143
1144
1145
1146
1147
1148
1149
1150
1151
1152
1153
1154
1155
1156
1157
1158
1159
1160
1161
1162
1163
1164
1165
1166
1167
1168
1169
1170
1171
1172
1173
1174
1175
1176
1177
1178
1179
1180
1181
1182
1183
1184
1185
1186
1187
1188
1189
1190
1191
1192
1193
1194
1195
1196
1197
1198
1199
1200
1201
1202
1203
1204
1205
1206
1207
1208
1209
1210
1211
1212
1213
1214
1215
1216
1217
1218
1219
1220
1221
1222
1223
1224
1225
1226
1227
1228
1229
1230
1231
1232
1233
1234
1235
1236
1237
1238
1239
1240
1241
1242
1243
1244
1245
1246
1247
1248
1249
1250
1251
1252
1253
1254
1255
1256
1257
1258
1259
1260
1261
1262
1263
1264
1265
1266
1267
1268
1269
1270
1271
1272
1273
1274
1275
1276
1277
1278
1279
1280
1281
1282
1283
1284
1285
1286
1287
1288
1289
1290
1291
1292
1293
1294
1295
1296
1297
1298
1299
1300
1301
1302
1303
1304
1305
1306
1307
1308
1309
1310
1311
1312
1313
1314
1315
1316
1317
1318
1319
1320
1321
1322
1323
1324
1325
1326
1327
1328
1329
1330
1331
1332
1333
1334
1335
1336
1337
1338
1339
1340
1341
1342
1343
1344
1345
1346
1347
1348
1349
1350
1351
1352
1353
1354
1355
1356
1357
1358
1359
1360
1361
1362
1363
1364
1365
1366
1367
1368
1369
1370
1371
1372
1373
1374
1375
1376
1377
1378
1379
1380
1381
1382
1383
1384
1385
1386
1387
1388
1389
1390
1391
1392
1393
1394
1395
1396
1397
1398
1399
1400
1401
1402
1403
1404
1405
1406
1407
1408
1409
1410
1411
1412
1413
1414
1415
1416
1417
1418
1419
1420
1421
1422
1423
1424
1425
1426
1427
1428
1429
1430
1431
1432
1433
1434
1435
1436
1437
1438
1439
1440
1441
1442
1443
1444
1445
1446
1447
1448
1449
1450
1451
1452
1453
1454
1455
1456
1457
1458
1459
1460
1461
1462
1463
1464
1465
1466
1467
1468
1469
1470
1471
1472
1473
1474
1475
1476
1477
1478
1479
1480
1481
1482
1483
1484
1485
1486
1487
1488
1489
1490
1491
1492
1493
1494
1495
1496
1497
1498
1499
1500
1501
1502
1503
1504
1505
1506
1507
1508
1509
1510
1511
1512
1513
1514
1515
1516
1517
1518
1519
1520
1521
1522
1523
1524
1525
1526
1527
1528
1529
1530
1531
1532
1533
1534
1535
1536
1537
1538
1539
1540
1541
1542
1543
1544
1545
1546
1547
1548
1549
1550
1551
1552
1553
1554
1555
1556
1557
1558
1559
1560
1561
1562
1563
1564
1565
1566
1567
1568
1569
1570
1571
1572
1573
1574
1575
1576
1577
1578
1579
1580
1581
1582
1583
1584
1585
1586
1587
1588
1589
1590
1591
1592
1593
1594
1595
1596
1597
1598
1599
1600
1601
1602
1603
1604
1605
1606
1607
1608
1609
1610
1611
1612
1613
1614
1615
1616
1617
1618
1619
1620
1621
1622
1623
1624
1625
1626
1627
1628
1629
1630
1631
1632
1633
1634
1635
1636
1637
1638
1639
1640
1641
1642
1643
1644
1645
1646
1647
1648
1649
1650
1651
1652
1653
1654
1655
1656
1657
1658
1659
1660
1661
1662
1663
1664
1665
1666
1667
1668
1669
1670
1671
1672
1673
1674
1675
1676
1677
1678
1679
1680
1681
1682
1683
1684
1685
1686
1687
1688
1689
1690
1691
1692
1693
1694
1695
1696
1697
1698
1699
1700
1701
1702
1703
1704
1705
1706
1707
1708
1709
1710
1711
1712
1713
1714
1715
1716
1717
1718
1719
1720
1721
1722
1723
1724
1725
1726
1727
1728
1729
1730
1731
1732
1733
1734
1735
1736
1737
1738
1739
1740
1741
1742
1743
1744
1745
1746
1747
1748
1749
1750
1751
1752
1753
1754
1755
1756
1757
1758
1759
1760
1761
1762
1763
1764
1765
1766
1767
1768
1769
1770
1771
1772
1773
1774
1775
1776
1777
1778
1779
1780
1781
1782
1783
1784
1785
1786
1787
1788
1789
1790
1791
1792
1793
1794
1795
1796
1797
1798
1799
1800
1801
1802
1803
1804
1805
1806
1807
1808
1809
1810
1811
1812
1813
1814
1815
1816
1817
1818
1819
1820
1821
1822
1823
1824
1825
1826
1827
1828
1829
1830
1831
1832
1833
1834
1835
1836
1837
1838
1839
1840
1841
1842
1843
1844
1845
1846
1847
1848
1849
1850
1851
1852
1853
1854
1855
1856
1857
1858
1859
1860
1861
1862
1863
1864
1865
1866
1867
1868
1869
1870
1871
1872
1873
1874
1875
1876
1877
1878
1879
1880
1881
1882
1883
1884
1885
1886
1887
1888
1889
1890
1891
1892
1893
1894
1895
1896
1897
1898
1899
1900
1901
1902
1903
1904
1905
1906
1907
1908
1909
1910
1911
1912
1913
1914
1915
1916
1917
1918
1919
1920
1921
1922
1923
1924
1925
1926
1927
1928
1929
1930
1931
1932
1933
1934
1935
1936
1937
1938
1939
1940
1941
1942
1943
1944
1945
1946
1947
1948
1949
1950
1951
1952
1953
1954
1955
1956
1957
1958
1959
1960
1961
1962
1963
1964
1965
1966
1967
1968
1969
1970
1971
1972
1973
1974
1975
1976
1977
1978
1979
1980
1981
1982
1983
1984
1985
1986
1987
1988
1989
1990
1991
1992
1993
1994
1995
1996
1997
1998
1999
2000
2001
2002
2003
2004
2005
2006
2007
2008
2009
2010
2011
2012
2013
2014
2015
2016
2017
2018
2019
2020
2021
2022
2023
2024
2025
2026
2027
2028
2029
2030
2031
2032
2033
2034
2035
2036
2037
2038
2039
2040
2041
2042
2043
2044
2045
2046
2047
2048
2049
2050
2051
2052
2053
2054
2055
2056
2057
2058
2059
2060
2061
2062
2063
2064
2065
2066
2067
2068
2069
2070
2071
2072
2073
2074
2075
2076
2077
2078
2079
2080
2081
2082
2083
2084
2085
2086
2087
2088
2089
2090
2091
2092
2093
2094
2095
2096
2097
2098
2099
2100
2101
2102
2103
2104
2105
2106
2107
2108
2109
2110
2111
2112
2113
2114
2115
2116
2117
2118
2119
2120
2121
2122
2123
2124
2125
2126
2127
2128
2129
2130
2131
2132
2133
2134
2135
2136
2137
2138
2139
2140
2141
2142
2143
2144
2145
2146
2147
2148
2149
2150
2151
2152
2153
2154
2155
2156
2157
2158
2159
2160
2161
2162
2163
2164
2165
2166
2167
2168
2169
2170
2171
2172
2173
2174
2175
2176
2177
2178
2179
2180
2181
2182
2183
2184
2185
2186
2187
2188
2189
2190
2191
2192
2193
2194
2195
2196
2197
2198
2199
2200
2201
2202
2203
2204
2205
2206
2207
2208
2209
2210
2211
2212
2213
2214
2215
2216
2217
2218
2219
2220
2221
2222
2223
2224
2225
2226
2227
2228
2229
2230
2231
2232
2233
2234
2235
2236
2237
2238
2239
2240
2241
2242
2243
2244
2245
2246
2247
2248
2249
2250
2251
2252
2253
2254
2255
2256
2257
2258
2259
2260
2261
2262
2263
2264
2265
2266
2267
2268
2269
2270
2271
2272
2273
2274
2275
2276
2277
2278
2279
2280
2281
2282
2283
2284
2285
2286
2287
2288
2289
2290
2291
2292
2293
2294
2295
2296
2297
2298
2299
2300
2301
2302
2303
2304
2305
2306
2307
2308
2309
2310
2311
2312
2313
2314
2315
2316
2317
2318
2319
2320
2321
2322
2323
2324
2325
2326
2327
2328
2329
2330
2331
2332
2333
2334
2335
2336
2337
2338
2339
2340
2341
2342
2343
2344
2345
2346
2347
2348
2349
2350
2351
2352
2353
2354
2355
2356
2357
2358
2359
2360
2361
2362
2363
2364
2365
2366
2367
2368
2369
2370
2371
2372
2373
2374
2375
2376
2377
2378
2379
2380
2381
2382
2383
2384
2385
2386
2387
2388
2389
2390
2391
2392
2393
2394
2395
2396
2397
2398
2399
2400
2401
2402
2403
2404
2405
2406
2407
2408
2409
2410
2411
2412
2413
2414
2415
2416
2417
2418
2419
2420
2421
2422
2423
2424
2425
2426
2427
2428
2429
2430
2431
2432
2433
2434
2435
2436
2437
2438
2439
2440
2441
2442
2443
2444
2445
2446
2447
2448
2449
2450
2451
2452
2453
2454
2455
2456
2457
2458
2459
2460
2461
2462
2463
2464
2465
2466
2467
2468
2469
2470
2471
2472
2473
2474
2475
2476
2477
2478
2479
2480
2481
2482
2483
2484
2485
2486
2487
2488
2489
2490
2491
2492
2493
2494
2495
2496
2497
2498
2499
2500
2501
2502
2503
2504
2505
2506
2507
2508
2509
2510
2511
2512
2513
2514
2515
2516
2517
2518
2519
2520
2521
2522
2523
2524
2525
2526
2527
2528
2529
2530
2531
2532
2533
2534
2535
2536
2537
2538
2539
2540
2541
2542
2543
2544
2545
2546
2547
2548
2549
2550
2551
2552
2553
2554
2555
2556
2557
2558
2559
2560
2561
2562
2563
2564
2565
2566
2567
2568
2569
2570
2571
2572
2573
2574
2575
2576
2577
2578
2579
2580
2581
2582
2583
2584
2585
2586
2587
2588
2589
25
```

It is a feature of the Map-Image and Feature layers. The Esri/layers sections can be used to find out the value for url. All the links are shown in the services section at <https://sampleserver6.arcgisonline.com/arcgis/rest/>. With a slight variation, the same URL value can be provided to a feature layer; for example, each feature layer's URL ends with 0, 1, 2, etc.

Sample code of Feature Layer:

```
<script>
  require([
    'dojo/dom',
    'esri/views/MapView',
    'esri/Map',
    'esri/layers/MapImageLayer',
    'esri/layers/FeatureLayer',
    'dojo/domReady!'
  ], function(
    dom,
    MapView,
    Map,
    MapImageLayer,
    FeatureLayer
  ){
    var map = new Map({
      basemap: 'streets'
    });

    var view = new MapView({
      map: map,
      container: 'viewDiv',
    });

    var fLayer = new FeatureLayer({
      url: 'https://sampleserver6.arcgisonline.com/arcgis/rest/services/Census/MapServer/3'
    });

    map.add(fLayer);
  });
</script>
```

Figure 5: Code5: Feature Layer code.

- The output of above code is shown in result section with figure 5. This code (code-5) completely deals with contains sample census data of the United States. It contains the information regarding Layer3 only.
- States (3): It is of polygon type.

By inspecting the layer we can get the information regarding its parameters like Spatial Reference, Initial Extent, Full Extent, Image Format Types and etc...

URL: It is a property of Map-Image layer and Feature layer. The value for url can be known from Esri/layers sections. All the url's are mentioned at <https://sampleserver6.arcgisonline.com/arcgis/rest/> in the services section.

Here in Feature layer we focus on individual layer where as in map service we can't find the individual layers.

- 8. Creation of rendering tools:** The rendering tool is available under “**esri/Renderers**” API reference. It supports Eleven various techniques. Apart of those techniques we are going to use “Simple-Renderer”.

Simple Renderer renders all features in a Layer with one Symbol. This renderer is used to simply visualize the site of geographic features. For example, layers signifying political borders, cities, buildings, etc. that are typically used for providing geographic perspective in an application may be defined with a single symbol per layer.

Simple-Renderer may only be used to craft visualizations for the below mentioned layer types:

- FeatureLayer
- SceneLayer
- MapImageLayer
- CSVLayer
- StreamLayer

Using Rendering we can create different symbols for point/line/polygon.

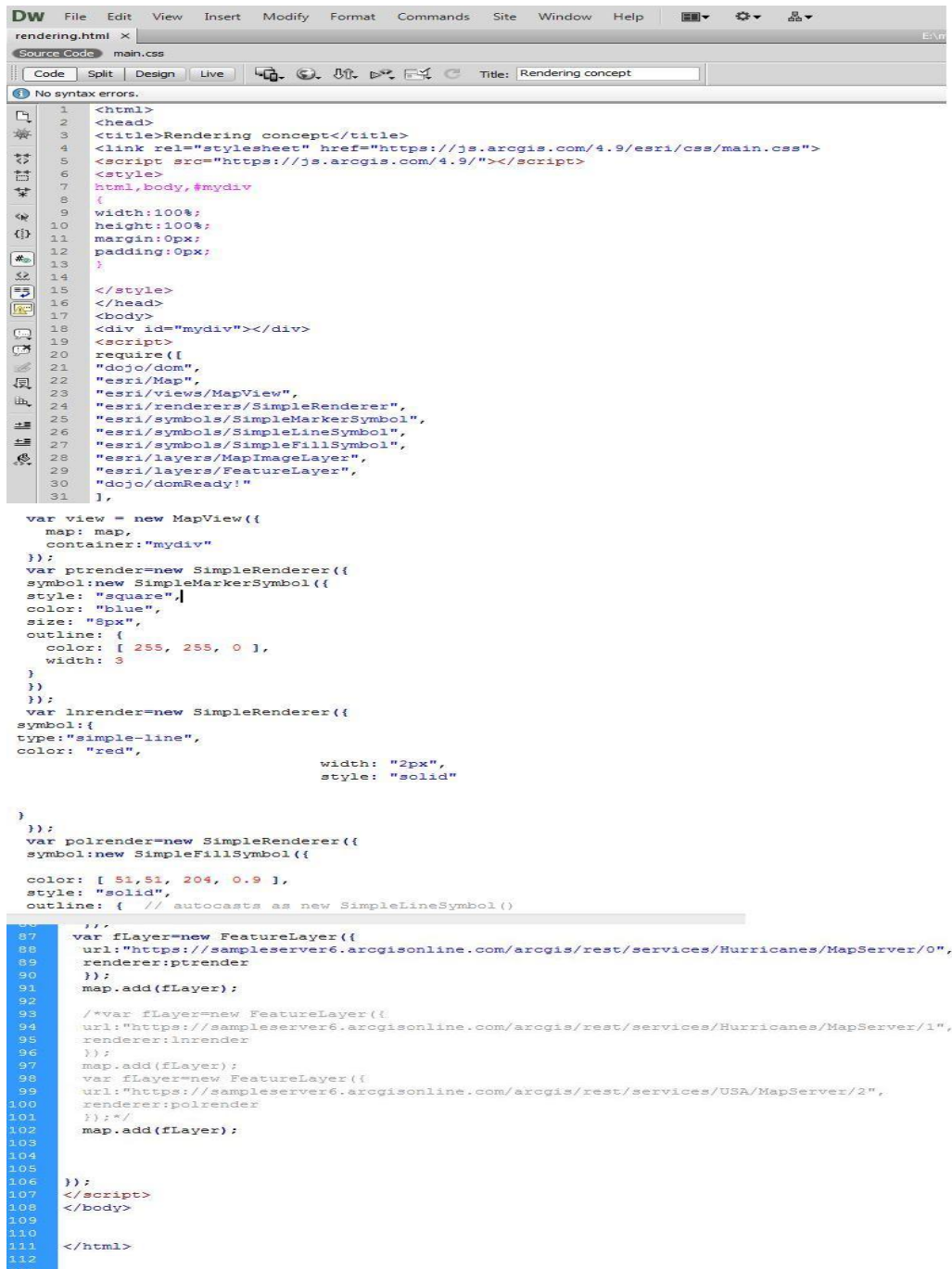
Under the simple renderer we have different things to discuss.

Simple Marker Symbol: It is used to denote points.

Simple Line Symbol: It is used to denote Lines.

Simple Fill Symbol: It is used to denote Areas.

Sample code of Simple Renderer:



```
rendering.html x
Source Code main.css
Code Split Design Live Title: Rendering concept
No syntax errors.
1 <html>
2 <head>
3 <title>Rendering concept</title>
4 <link rel="stylesheet" href="https://js.arcgis.com/4.9/esri/css/main.css">
5 <script src="https://js.arcgis.com/4.9/"></script>
6 <style>
7 html,body,#mydiv
8 {
9 width:100%;
10 height:100%;
11 margin:0px;
12 padding:0px;
13 }
14
15 </style>
16 </head>
17 <body>
18 <div id="mydiv"></div>
19 <script>
20 require([
21 "dojo/dcm",
22 "esri/Map",
23 "esri/views/MapView",
24 "esri/renderers/SimpleRenderer",
25 "esri/symbols/SimpleMarkerSymbol",
26 "esri/symbols/SimpleLineSymbol",
27 "esri/symbols/SimpleFillSymbol",
28 "esri/layers/MapImageLayer",
29 "esri/layers/FeatureLayer",
30 "dojo/dcmReady!"
31 ],
32
33 var view = new MapView({
34 map: map,
35 container:"mydiv"
36 });
37 var ptrender=new SimpleRenderer({
38 symbol:new SimpleMarkerSymbol({
39 style: "square",
40 color: "blue",
41 size: "8px",
42 outline: {
43 color: [ 255, 255, 0 ],
44 width: 3
45 }
46 })
47 });
48 var lnrender=new SimpleRenderer({
49 symbol:{
50 type:"simple-line",
51 color: "red",
52 width: "2px",
53 style: "solid"
54 }
55 });
56 var polrender=new SimpleRenderer({
57 symbol:new SimpleFillSymbol({
58 color: [ 51,51, 204, 0.9 ],
59 style: "solid",
60 outline: { // autocasts as new SimpleLineSymbol()
61
62
63
64
65
66
67
68
69
70
71
72
73
74
75
76
77
78
79
80
81
82
83
84
85
86
87
88
89
90
91
92
93
94
95
96
97
98
99
100
101
102
103
104
105
106
107
108
109
110
111
112
113
114
115
116
117
118
119
120
121
122
123
124
125
126
127
128
129
130
131
132
133
134
135
136
137
138
139
140
141
142
143
144
145
146
147
148
149
150
151
152
153
154
155
156
157
158
159
160
161
162
163
164
165
166
167
168
169
170
171
172
173
174
175
176
177
178
179
180
181
182
183
184
185
186
187
188
189
190
191
192
193
194
195
196
197
198
199
200
201
202
203
204
205
206
207
208
209
210
211
212
213
214
215
216
217
218
219
220
221
222
223
224
225
226
227
228
229
230
231
232
233
234
235
236
237
238
239
240
241
242
243
244
245
246
247
248
249
250
251
252
253
254
255
256
257
258
259
260
261
262
263
264
265
266
267
268
269
270
271
272
273
274
275
276
277
278
279
280
281
282
283
284
285
286
287
288
289
290
291
292
293
294
295
296
297
298
299
300
301
302
303
304
305
306
307
308
309
310
311
312
313
314
315
316
317
318
319
320
321
322
323
324
325
326
327
328
329
330
331
332
333
334
335
336
337
338
339
340
341
342
343
344
345
346
347
348
349
350
351
352
353
354
355
356
357
358
359
360
361
362
363
364
365
366
367
368
369
370
371
372
373
374
375
376
377
378
379
380
381
382
383
384
385
386
387
388
389
390
391
392
393
394
395
396
397
398
399
400
401
402
403
404
405
406
407
408
409
410
411
412
413
414
415
416
417
418
419
420
421
422
423
424
425
426
427
428
429
430
431
432
433
434
435
436
437
438
439
440
441
442
443
444
445
446
447
448
449
450
451
452
453
454
455
456
457
458
459
460
461
462
463
464
465
466
467
468
469
470
471
472
473
474
475
476
477
478
479
480
481
482
483
484
485
486
487
488
489
490
491
492
493
494
495
496
497
498
499
500
501
502
503
504
505
506
507
508
509
510
511
512
513
514
515
516
517
518
519
520
521
522
523
524
525
526
527
528
529
530
531
532
533
534
535
536
537
538
539
540
541
542
543
544
545
546
547
548
549
550
551
552
553
554
555
556
557
558
559
560
561
562
563
564
565
566
567
568
569
570
571
572
573
574
575
576
577
578
579
580
581
582
583
584
585
586
587
588
589
590
591
592
593
594
595
596
597
598
599
600
601
602
603
604
605
606
607
608
609
610
611
612
613
614
615
616
617
618
619
620
621
622
623
624
625
626
627
628
629
630
631
632
633
634
635
636
637
638
639
640
641
642
643
644
645
646
647
648
649
650
651
652
653
654
655
656
657
658
659
660
661
662
663
664
665
666
667
668
669
670
671
672
673
674
675
676
677
678
679
680
681
682
683
684
685
686
687
688
689
690
691
692
693
694
695
696
697
698
699
700
701
702
703
704
705
706
707
708
709
710
711
712
713
714
715
716
717
718
719
720
721
722
723
724
725
726
727
728
729
730
731
732
733
734
735
736
737
738
739
740
741
742
743
744
745
746
747
748
749
750
751
752
753
754
755
756
757
758
759
760
761
762
763
764
765
766
767
768
769
770
771
772
773
774
775
776
777
778
779
780
781
782
783
784
785
786
787
788
789
790
791
792
793
794
795
796
797
798
799
800
801
802
803
804
805
806
807
808
809
810
811
812
813
814
815
816
817
818
819
820
821
822
823
824
825
826
827
828
829
830
831
832
833
834
835
836
837
838
839
840
841
842
843
844
845
846
847
848
849
850
851
852
853
854
855
856
857
858
859
860
861
862
863
864
865
866
867
868
869
870
871
872
873
874
875
876
877
878
879
880
881
882
883
884
885
886
887
888
889
890
891
892
893
894
895
896
897
898
899
900
901
902
903
904
905
906
907
908
909
910
911
912
913
914
915
916
917
918
919
920
921
922
923
924
925
926
927
928
929
930
931
932
933
934
935
936
937
938
939
940
941
942
943
944
945
946
947
948
949
950
951
952
953
954
955
956
957
958
959
960
961
962
963
964
965
966
967
968
969
970
971
972
973
974
975
976
977
978
979
980
981
982
983
984
985
986
987
988
989
990
991
992
993
994
995
996
997
998
999
1000
1001
1002
1003
1004
1005
1006
1007
1008
1009
1010
1011
1012
1013
1014
1015
1016
1017
1018
1019
1020
1021
1022
1023
1024
1025
1026
1027
1028
1029
1030
1031
1032
1033
1034
1035
1036
1037
1038
1039
1040
1041
1042
1043
1044
1045
1046
1047
1048
1049
1050
1051
1052
1053
1054
1055
1056
1057
1058
1059
1060
1061
1062
1063
1064
1065
1066
1067
1068
1069
1070
1071
1072
1073
1074
1075
1076
1077
1078
1079
1080
1081
1082
1083
1084
1085
1086
1087
1088
1089
1090
1091
1092
1093
1094
1095
1096
1097
1098
1099
1100
1101
1102
1103
1104
1105
1106
1107
1108
1109
1110
1111
1112
1113
1114
1115
1116
1117
1118
1119
1120
1121
1122
1123
1124
1125
1126
1127
1128
1129
1130
1131
1132
1133
1134
1135
1136
1137
1138
1139
1140
1141
1142
1143
1144
1145
1146
1147
1148
1149
1150
1151
1152
1153
1154
1155
1156
1157
1158
1159
1160
1161
1162
1163
1164
1165
1166
1167
1168
1169
1170
1171
1172
1173
1174
1175
1176
1177
1178
1179
1180
1181
1182
1183
1184
1185
1186
1187
1188
1189
1190
1191
1192
1193
1194
1195
1196
1197
1198
1199
1200
1201
1202
1203
1204
1205
1206
1207
1208
1209
1210
1211
1212
1213
1214
1215
1216
1217
1218
1219
1220
1221
1222
1223
1224
1225
1226
1227
1228
1229
1230
1231
1232
1233
1234
1235
1236
1237
1238
1239
1240
1241
1242
1243
1244
1245
1246
1247
1248
1249
1250
1251
1252
1253
1254
1255
1256
1257
1258
1259
1260
1261
1262
1263
1264
1265
1266
1267
1268
1269
1270
1271
1272
1273
1274
1275
1276
1277
1278
1279
1280
1281
1282
1283
1284
1285
1286
1287
1288
1289
1290
1291
1292
1293
1294
1295
1296
1297
1298
1299
1300
1301
1302
1303
1304
1305
1306
1307
1308
1309
1310
1311
1312
1313
1314
1315
1316
1317
1318
1319
1320
1321
1322
1323
1324
1325
1326
1327
1328
1329
1330
1331
1332
1333
1334
1335
1336
1337
1338
1339
1340
1341
1342
1343
1344
1345
1346
1347
1348
1349
1350
1351
1352
1353
1354
1355
1356
1357
1358
1359
1360
1361
1362
1363
1364
1365
1366
1367
1368
1369
1370
1371
1372
1373
1374
1375
1376
1377
1378
1379
1380
1381
1382
1383
1384
1385
1386
1387
1388
1389
1390
1391
1392
1393
1394
1395
1396
1397
1398
1399
1400
1401
1402
1403
1404
1405
1406
1407
1408
1409
1410
1411
1412
1413
1414
1415
1416
1417
1418
1419
1420
1421
1422
1423
1424
1425
1426
1427
1428
1429
1430
1431
1432
1433
1434
1435
1436
1437
1438
1439
1440
1441
1442
1443
1444
1445
1446
1447
1448
1449
1450
1451
1452
1453
1454
1455
1456
1457
1458
1459
1460
1461
1462
1463
1464
1465
1466
1467
1468
1469
1470
1471
1472
1473
1474
1475
1476
1477
1478
1479
1480
1481
1482
1483
1484
1485
1486
1487
1488
1489
1490
1491
1492
1493
1494
1495
1496
1497
1498
1499
1500
1501
1502
1503
1504
1505
1506
1507
1508
1509
1510
1511
1512
1513
1514
1515
1516
1517
1518
1519
1520
1521
1522
1523
1524
1525
1526
1527
1528
1529
1530
1531
1532
1533
1534
1535
1536
1537
1538
1539
1540
1541
1542
1543
1544
1545
1546
1547
1548
1549
1550
1551
1552
1553
1554
1555
1556
1557
1558
1559
1560
1561
1562
1563
1564
1565
1566
1567
1568
1569
1570
1571
1572
1573
1574
1575
1576
1577
1578
1579
1580
1581
1582
1583
1584
1585
1586
1587
1588
1589
1590
1591
1592
1593
1594
1595
1596
1597
1598
1599
1600
1601
1602
1603
1604
1605
1606
1607
1608
1609
1610
1611
1612
1613
1614
1615
1616
1617
1618
1619
1620
1621
1622
1623
1624
1625
1626
1627
1628
1629
1630
1631
1632
1633
1634
1635
1636
1637
1638
1639
1640
1641
1642
1643
1644
1645
1646
1647
1648
1649
1650
1651
1652
1653
1654
1655
1656
1657
1658
1659
1660
1661
1662
1663
1664
1665
1666
1667
1668
1669
1670
1671
1672
1673
1674
1675
1676
1677
1678
1679
1680
1681
1682
1683
1684
1685
1686
1687
1688
1689
1690
1691
1692
1693
1694
1695
1696
1697
1698
1699
1700
1701
1702
1703
1704
1705
1706
1707
1708
1709
1710
1711
1712
1713
1714
1715
1716
1717
1718
1719
1720
1721
1722
1723
1724
1725
1726
1727
1728
1729
1730
1731
1732
1733
1734
1735
1736
1737
1738
1739
1740
1741
1742
1743
1744
1745
1746
1747
1748
1749
1750
1751
1752
1753
1754
1755
1756
1757
1758
1759
1760
1761
1762
1763
1764
1765
1766
1767
1768
1769
1770
1771
1772
1773
1774
1775
1776
1777
1778
1779
1780
1781
1782
1783
1784
1785
1786
1787
1788
1789
1790
1791
1792
1793
1794
1795
1796
1797
1798
1799
1800
1801
1802
1803
1804
1805
1806
1807
1808
1809
1810
1811
1812
1813
1814
1815
1816
1817
1818
1819
1820
1821
1822
1823
1824
1825
1826
1827
1828
1829
1830
1831
1832
1833
1834
1835
1836
1837
1838
1839
1840
1841
1842
1843
1844
1845
1846
1847
1848
1849
1850
1851
1852
1853
1854
1855
1856
1857
1858
1859
1860
1861
1862
1863
1864
1865
1866
1867
1868
1869
1870
1871
1872
1873
1874
1875
1876
1877
1878
1879
1880
1881
1882
1883
1884
1885
1886
1887
1888
1889
1890
1891
1892
1893
1894
1895
1896
1897
1898
1899
1900
1901
1902
1903
1904
1905
1906
1907
1908
1909
1910
1911
1912
1913
1914
1915
1916
1917
1918
1919
1920
1921
1922
1923
1924
1925
1926
1927
1928
1929
1930
1931
1932
1933
1934
1935
1936
1937
1938
1939
1940
1941
1942
1943
1944
1945
1946
1947
1948
1949
1950
1951
1952
1953
1954
1955
1956
1957
1958
1959
1960
1961
1962
1963
1964
1965
1966
1967
1968
1969
1970
1971
1972
1973
1974
1975
1976
1977
1978
1979
1980
1981
1982
1983
1984
1985
1986
1987
1988
1989
1990
1991
1992
1993
1994
1995
1996
1997
1998
1999
2000
2001
2002
2003
2004
2005
2006
2007
2008
2009
2010
2011
2012
2013
2014
2015
2016
2017
2018
2019
2020
2021
2022
2023
2024
2025
2026
2027
2028
2029
2030
2031
2032
2033
2034
2035
2036
2037
2038
2039
2040
2041
2042
2043
2044
2045
2046
2047
2048
2049
2050
2051
2052
2053
2054
2055
2056
2057
2058
2059
2060
2061
2062
2063
2064
2065
2066
2067
2068
2069
2070
2071
2072
2073
2074
2075
2076
2077
2078
2079
2080
2081
2082
2083
2084
2085
2086
2087
2088
2089
2090
2091
2092
2093
2094
2095
2096
2097
2098
2099
2100
2101
2102
2103
2104
2105
2106
2107
2108
2109
2110
2111
2112
2113
2114
2115
2116
2117
2118
2119
2120
2121
2122
2123
2124
2125
2126
2127
2128
2129
2130
2131
2132
2133
2134
2135
2136
2137
2138
2139
2140
2141
2142
2143
2144
2145
2146
2147
2148
2149
2150
2151
2152
2153
2154
2155
2156
2157
2158
2159
2160
2161
2162
2163
2164
2165
2166
2167
2168
2169
2170
2171
2172
2173
2174
2175
2176
2177
2178
2179
2180
2181
2182
2183
2184
2185
2186
2187
2188
2189
2190
2191
2192
2193
2194
2195
2196
2197
2198
2199
2200
2201
2202
2203
2204
2205
2206
2207
2208
2209
2210
2211
2212
2213
2214
2215
2216
2217
2218
2219
2220
2221
2222
2223
2224
2225
2226
2227
2228
2229
2230
2231
2232
2233
2234
2235
2236
2237
2238
2239
2240
2241
2242
2243
2244
2245
2246
2247
2248
2249
2250
2251
2252
2253
2254
2255
2256
2257
2258
2259
2260
2261
2262
2263
2264
2265
2266
2267
2268
2269
2270
2271
2272
2273
2274
2275
2276
2277
2278
2279
2280
2281
2282
2283
2284
2285
2286
2287
2288
2289
2290
2291
2292
2293
2294
2295
2296
2297
2298
2299
2300
2301
2302
2303
2304
2305
2306
2307
2308
2309
2310
2311
2312
2313
2314
2315
2316
2317
2318
2319
2320
2321
2322
2323
2324
2325
2326
2327
2328
2329
2330
2331
2332
2333
2334
2335
2336
2337
2338
2339
2340
2341
2342
2343
2344
2345
2346
2347
2348
2349
2350
2351
2352
2353
2354
2355
2356
2357
2358
2359
2360
2361
2362
2363
2364
2365
2366
2367
2368
2369
2370
2371
2372
2373
2374
2375
2376
2377
2378
2379
2380
2381
2382
2383
2384
2385
2386
2387
2388
2389
2390
2391
2392
2393
2394
2395
2396
2397
2398
2399
2400
2401
2402
2403
2404
2405
2406
2407
2408
2409
2410
2411
2412
2413
2414
2415
2416
2417
2418
2419
2420
2421
2422
2423
2424
2425
2426
2427
2428
2429
2430
2431
2432
2433
2434
2435
2436
2437
2438
2439
2440
2441
2442
2443
2444
2445
2446
2447
2448
2449
2450
2451
2452
2453
2454
2455
2456
2457
2458
2459
2460
2461
2462
2463
2464
2465
2466
2467
2468
2469
2470
2471
2472
2473
2474
2475
2476
2477
2478
2479
2480
2481
2482
2483
2484
2485
2486
2487
2488
2489
2490
2491
2492
2493
2494
2495
2496
2497
2498
2499
2500
2501
2502
2503
2504
2505
2506
2507
2508
2509
2510
2511
2512
2513
2514
2515
2516
2517
2518
2519
2520
2521
2522
2523
2524
2525
2526
2527
2528
2529
2530
2531
2532
2533
2534
2535
2536
2537
2538
2539
2540
2541
2542
2543
2544
2545
2546
2547
2548
2549
2550
2551
2552
2553
2554
2555
2556
2557
2558
2559
2560
2561
2562
2563
2564
2565
2566
2567
2568
25
```


9. Generation of query task: It is available under: “esri/tasks/QueryTask” API reference.

It executes different types of queries on a layer. The most common method used is execute (), which execute the query as defined in the Query object that is send as a factor to the function.

QueryTask.execute() uses the promise that resolves to a feature-set, which contain the features in the layer that suit the Query.

With QueryTask, you can also gain the number of features that suit the query, the extent of features, related records or features associated with a feature.

QueryTask.execute () returns a promise that resolve a feature set which contains features in the layer that suit the query.

Sample code of Query Task:

```
52
53     var query = new Query();
54     query.where = "STATE_NAME = 'Washington' OR STATE_NAME = 'Montana'";
55     query.returnGeometry = true;
56     query.outFields = ['STATE_NAME', 'NAME'];
57
58     var qTask = new QueryTask({
59         url: 'https://sampleserver6.arcgisonline.com/arcgis/rest/services/USA/MapServer/3'
60     });
61
62     qTask.execute(query).then(function(results){
63         var features = results.features;
64         console.log(features);
65     }, function(error){
66         console.log(error);
67     });
68
69 }
```

Figure7: Code7: Query task code for operations on a layer

The output of above code (code-7) is shown in Figure 9. In the Query Task execution one of the constraints is, Information about the complete feature layer (Total vector data) is available in output at single instant only. In-order to view the individual vector data using its object id we can know about its details. To avoid this constraint popup-template is used for getting the details of any vector data using a single click.

10. Popup-template: It is available under “esri/popuptemplate”.

For a Graphic or particular Layer, a Popup-Template defines and formats the content of a Popup. When a feature in the view is selected, a Popup-Template enables the user to access data from feature characteristics and data returned from Arcade terms.

The Popup-Template contains content and title properties that act as a template used to make over a feature's attributes into an HTML representation. The syntax {field-Name} or {expression/expression-Name} performs parameter exchange. The default performance on a graphic is to prove the view's popup after a click on the graphic. A Popup-Template is required for this default behaviour.

By clicking on it, it provides information on the feature that is presented. The output map's zoom level and clicking on it change how it behaves. The user can get value from feature characteristics of a specific feature in output using a popup template. It has a variety of qualities, including actions, material, and titles, among others. Depending on our needs, we must choose the ones that best meet those criteria. It offers customisation for the "contain" property.

Sample code for Pop-up Template:

```
40 var view = new MapView({
41     map: map,
42     container:"mydiv"
43 });
44
45 var pTemplate= new PopupTemplate({
46     title: "Population of us",
47     content: "{*}"
48     //content: "state_name:{state_name}<br> state_abbr:{state_abbr} <img width='50px' height='50px'
src='https://jntuh.ac.in/assets/uploads/e182b-0Y4A7358.JPG'>"
49
50 });
51
52 var fLayer=new FeatureLayer({
53 url:"https://sampleserver6.arcgisonline.com/arcgis/rest/services/USA/MapServer/2",
54 popupTemplate:pTemplate
55 });
56 map.add(fLayer);
57 });
```

Figure 8: Code 8: Popup template for displaying the feature information at the instant.

The output of above code (code-8) is shown in Figure 10. Popup-template is used for getting the details of any vector data using a single click on the selected feature.

11. Placing the widgets: It is available under “esri/widgets” API reference. There are many widgets available under this API. But here only Layer-List, Legend, Locate have been used. Based on our dependency we can opt the widget which suits to our need.

Layer-List: It is available under "esri/widgets/LayerList" API.

The Layer-List widget provides a way to exhibit a file of layers, and switch on/off their visibility. The List-Item API provide access to each layer's property, allows the developer to organize actions related to the layer, and allows the developer to insert content to the item related to the layer.

To conceal the layers in the map from the widget Layer-List we must set the property of list on the desired layers to hide.

Legend: It is available under " esri/widgets/Legend " API.

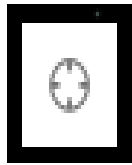
The Legend widget displays symbols and labels for layers in a map. Labels and their matching symbols depend on the value set in the renderer of the layer. The legend will only display layers and sub-layers that are evident in the view.

The legend automatically updates when

- the visibility of a sub-layer or layer changes
- a layer is new or isolated from the map
- The layer's renderer, title or opacity is changed
- the legend-enabled property is changed (set to false or true on the layer)

Locate: It is available under "esri/widgets/Locate" API.

Provides a simple widget that animate the view to the user's present location. The view rotates according to the route where the tracked device is heading towards. By default the widget looks like the following:



Sample code for widgets:

```
104         var miLayer = new MapImageLayer({
105             url: mapserver
106         });
107
108         var stLayer = new FeatureLayer({
109             url: "https://sampleserver6.arcgisonline.com/arcgis/rest/services/USA/MapServer/2"
110         });
111         var cntLayer = new FeatureLayer({
112             url: "https://sampleserver6.arcgisonline.com/arcgis/rest/services/USA/MapServer/3"
113         });
114         var hgtLayer = new FeatureLayer({
115             url: "https://sampleserver6.arcgisonline.com/arcgis/rest/services/USA/MapServer/1"
116         });
117
118         map.layers.add(cntLayer);
119         map.layers.add(hgtLayer);
120         map.layers.add(stLayer);
121
122         map.layers.add(miLayer);
123         var lList = new LayerList({
124             view: view,
125             container: "LayerList"
126         });
127
128         var legend = new Legend({
129             view: view,
130             container: "legendDiv"
131         });
132
133         var locate = new Locate({
134             view: view
135         });
136
137         view.ui.add(locate, "bottom-left");
```

Figure9: Code 9: Widgets code for placing the widgets on the base map.

The output of above code (code-9) is shown in Figure 11,12, 13. Layer List code is used for appending the layers to base map mentioned in source code. Legend code is used for mentioning the information about features .Locate is used for navigating to the existing location of user.

12. Providing various Toggles: The Toggle is available under "esri/widgets" API reference. Here we are discussing about Basemap-Gallery. The Base map gallery is available under "esri/widgets/BasemapGallery".

The Base-map-Gallery widget will show the set of images representing base-maps from ArcGIS.com or a user-defined image services .When a new base-map is selected from the Base-map-Gallery, the map's base-map layers are removed and replaced with the base-map layers of the associated base-map selected in the gallery.

Sample code for Toggle:

```
44     parser.parse().then(function(){
45
46         var map = new Map({
47             basemap: 'streets'
48         });
49
50         var view = new MapView({
51             map: map,
52             container: 'viewDiv',
53             zoom : 4,
54             center : [77.461646,21.698939]
55         });
56
57         var bGallery = new BasemapGallery({
58             view: view,
59             container : 'bMapGallery'
60         });
61         |
62         view.ui.add(bGallery, "top-right");
63
64         } );
65
66     });
67
```

Figure10: Code 10: Base Map Gallery code.

The output of above code (code-10) is explained in figure 14.

It will display all the maps at a time we can select any of them. By default Eleven different types of maps are available we can choose any of the map from them. The Base map Gallery is available under “Dojo” technique. Whenever the form gets loaded by default the BaseMapGallery will be under false mode, By clicking on the Dojo technique we can see all the available maps.

13. Publishing Geo Spatial data: Publishing the Geo Spatial data is important task as it facilitates the user work in sharing the data to destination in easy way. The publishing of

Data can be done in two ways

- It can be published in local server (Local system).
- It can be published in Global server.

Once the data is published it gets ready with all the supporting documents, i.e. If a Geo-referenced image is going to be published it gets shared to the server along with its supporting documents i.e. RRD file. In case of publishing we can publish the Images, vector data, Tools of Arc-GIS, Topo sheet data to the server system.

The output of the above technique is discussed in **figure 15(Results)** section.

Results:

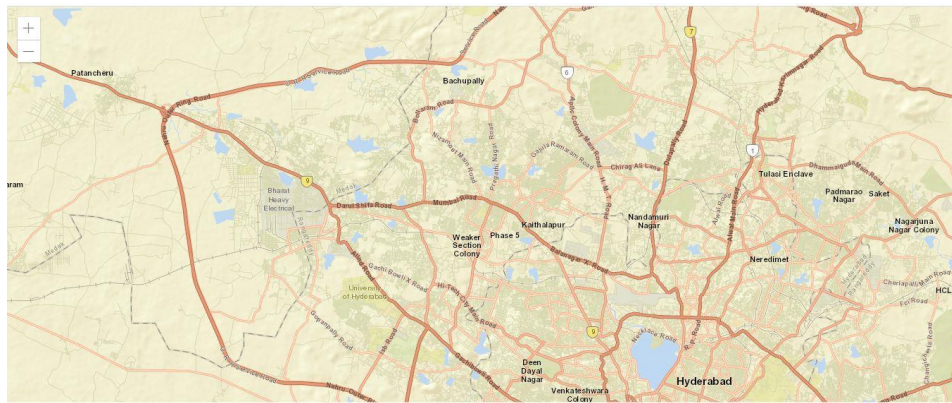


Figure 11: Base-Map is shown by focus on Hyderabad region.

Figure 1 up top shows an example base map that is displayed utilizing the Arc-GIS server API setup. The view set here in the aforementioned code was "streets." Alternative values, such as hybrid, satellite, and so forth, can also be utilized. Just the map is being shown here.



Figure12: Style-sheets provided for designing of web page.

In the above figure (figure2) a web page is designed and made customized by placing the events in it using css techniques a part of customization buttons, drop down also used in the output. The styles that be provided common or different for the view and events in the page.

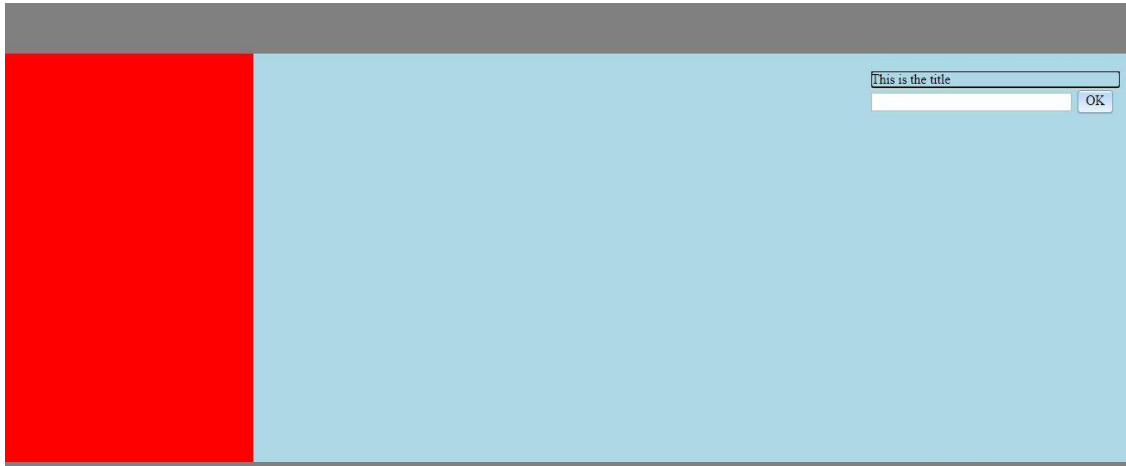


Figure13: Styling of web page using Dojo Tool kit

Using the Style-sheets a webpage can be designed in an attractive way. It means customization of designing can also be done Dojo Tool kit. Using Dojo coding effort can be reduced for a programmer. Instead he can use the default code that was given with dojo.

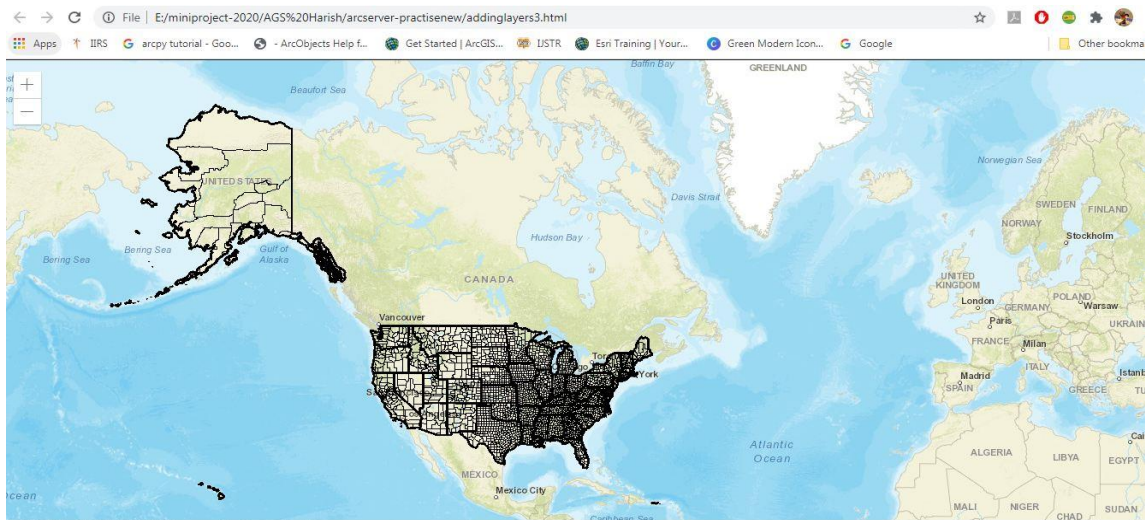


Figure 4: Map Image layer containing 3 layers of sample census data .

Using the Map Image layer, the above figure (figure 4) shows all the vector data layers at once. The parent layer of the feature layer is supposedly the map image layer. Three distinct layers, including point data, line data, and polygon data, are present in the output seen above.

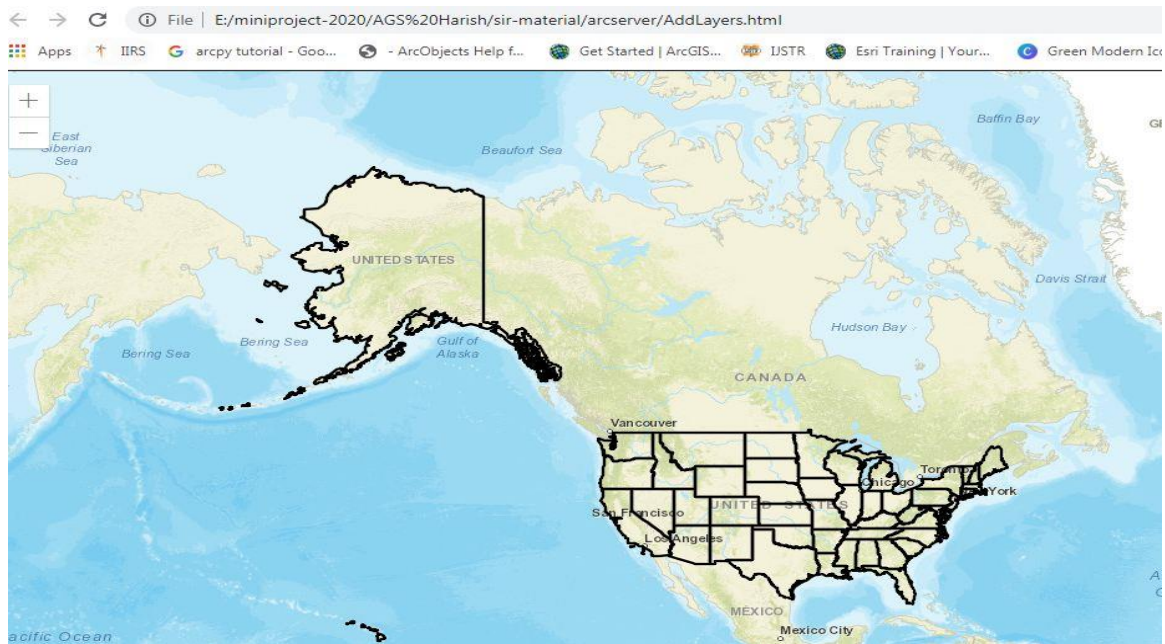


Figure 15: Feature Layer containing Layer 3 of sample census data.

The polygon layer of census data is depicted in the previous picture (figure 5). The feature layer can also be used to represent additional layers, such as line and point data. A single layer at a time is represented by a feature layer.

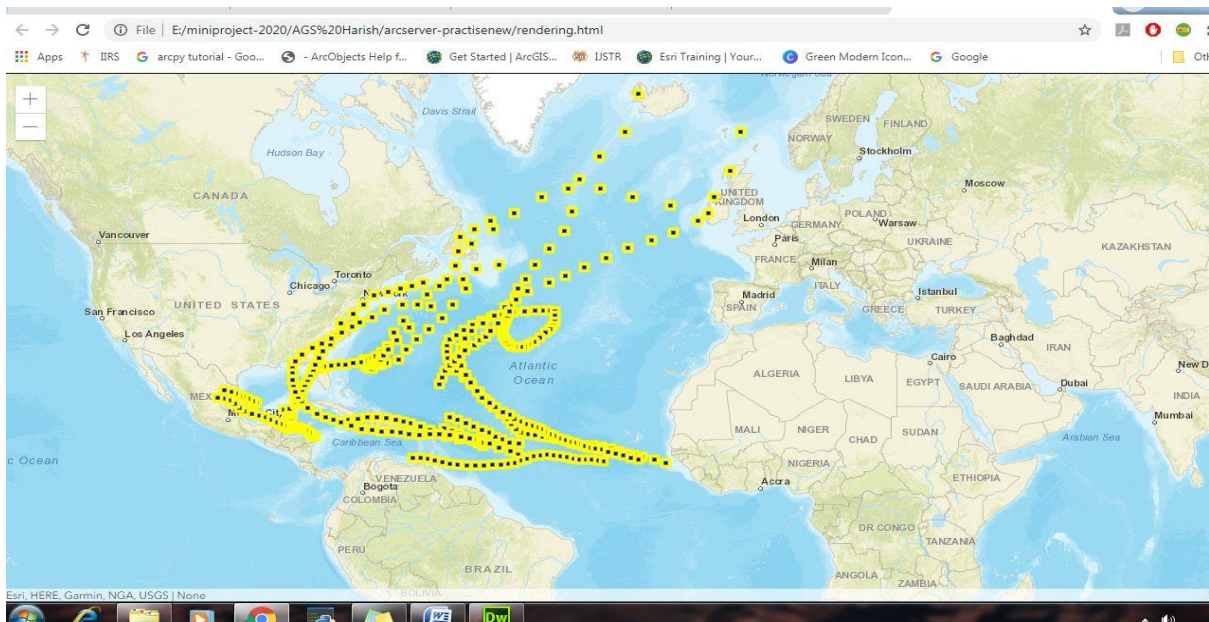


Figure 16: Customization of Point data using Simple Marker Symbol.

Simple-Marker-Symbol is used for rendering 2D Point geometries with a simple shape and colour in either a Map-View or a Scene-View.

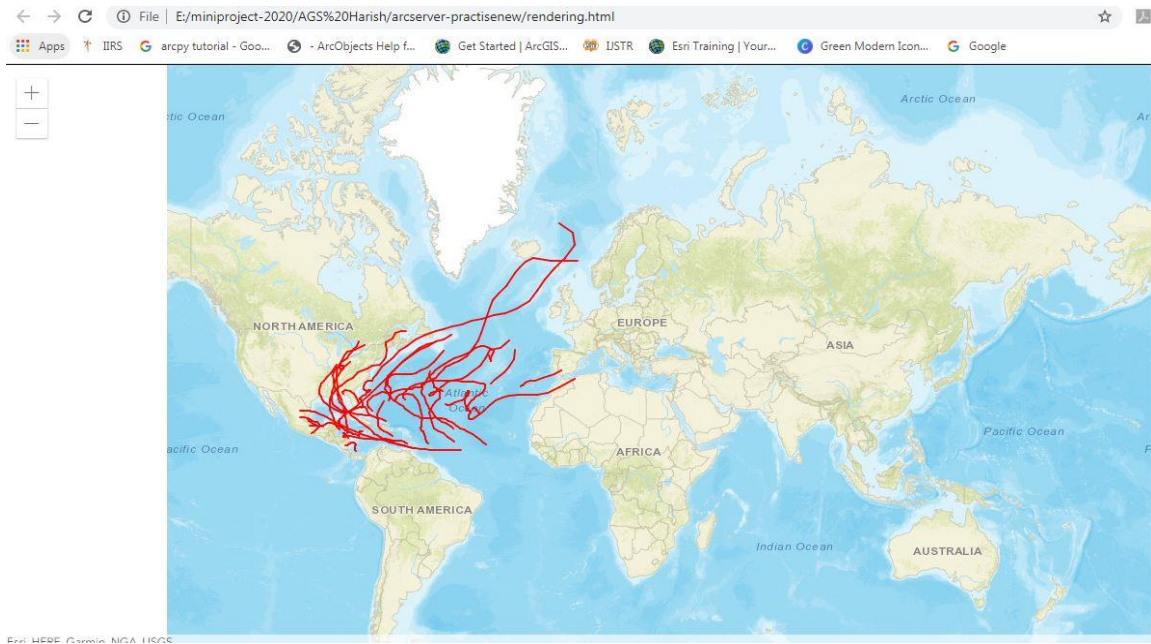


Figure17: Customization of Line data using Simple Line Symbol.

Simple-Line-Symbol may also be used to symbolize 2D polyline features in a Scene-View.

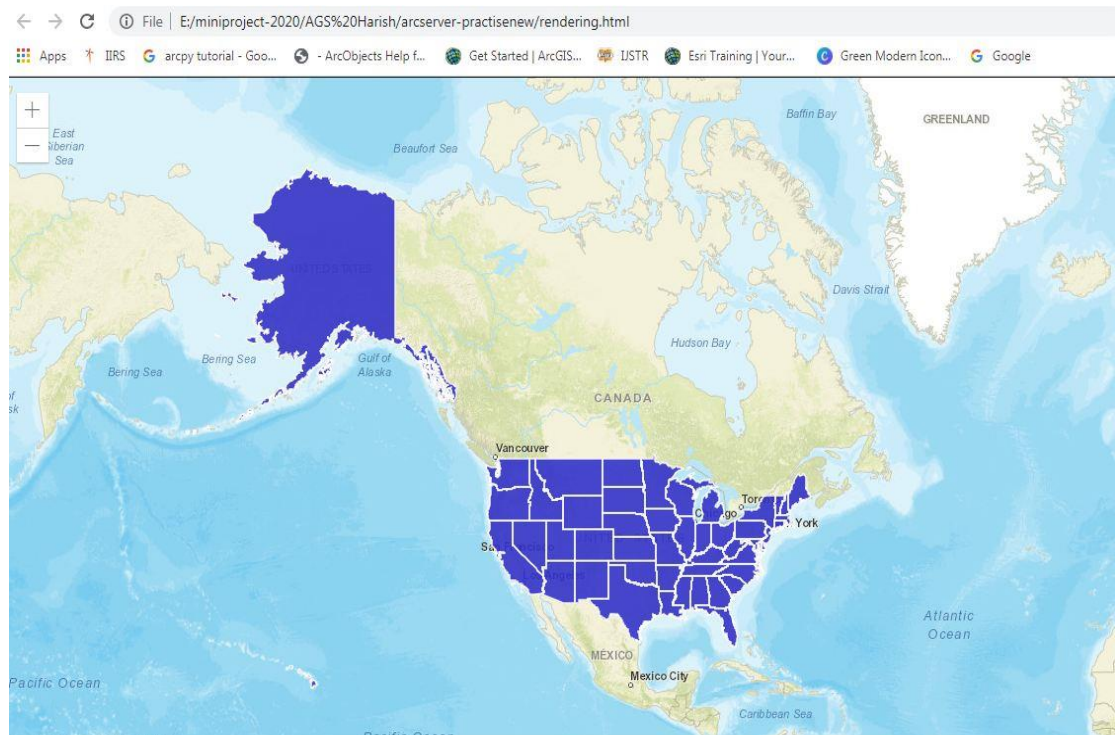


Figure 18: Customization of Polygon data using Simple Fill Symbol.

Simple Fill Symbol is used for rendering 2D polygons in either a Map-View or a Scene-View. It can be filled with a solid color, or a pattern. Simple-Fill-Symbols may be applied to polygon features in a Feature-Layer or an individual Graphic

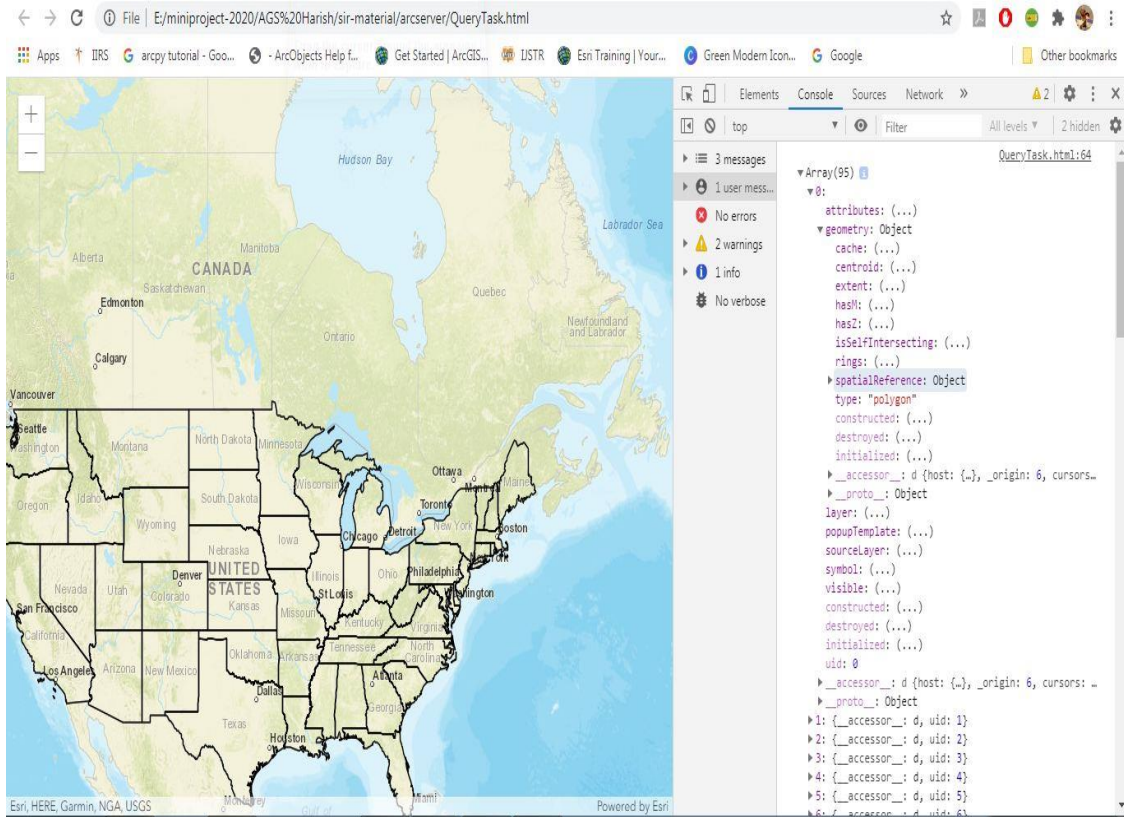


Figure 19: Query Task execution on the feature layer.

By looking the above output we can know the output of query task. Total information about feature layer is displayed, It can be known to user about total number of features present in the existing layer.

By navigating to developer tools → console section → using the array we can know number of features present in existing layer.

By clicking on any layer we can know its details like geometry, spatial reference, type and so-on etc...

Here knowing the object id and navigating is bit difficult to overcome this issue concept of pop-up template is used.

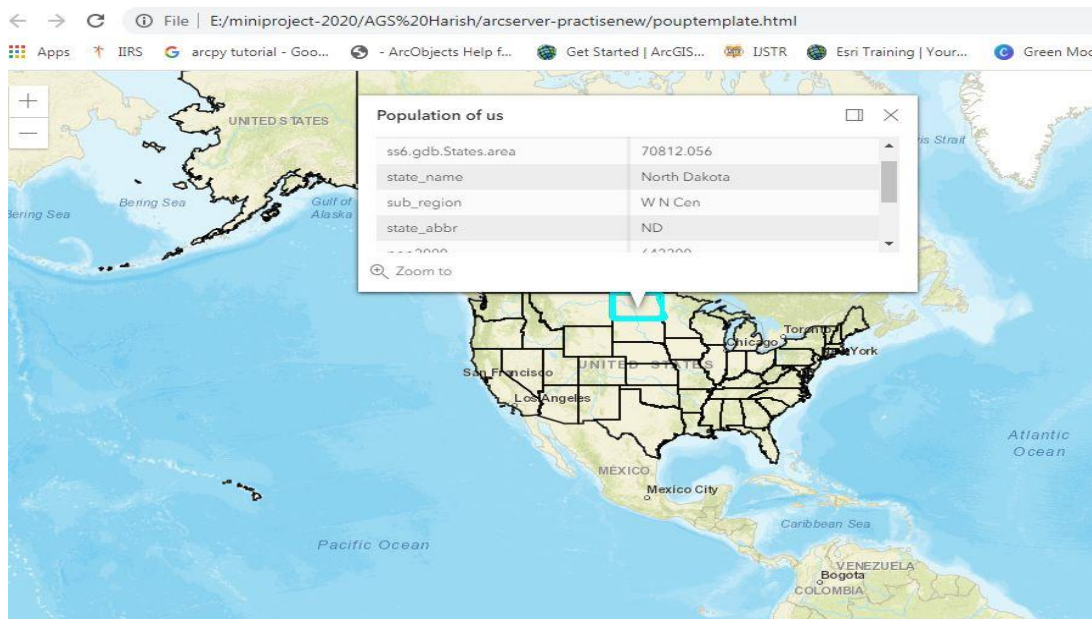


Figure 20: Popup-Template for displaying the feature information.

Using a popup template reference, facts about the selected feature are displayed in a tiny window. As the issue with the Query task is that it takes more time to learn the specifics of a feature, the popup template can help.

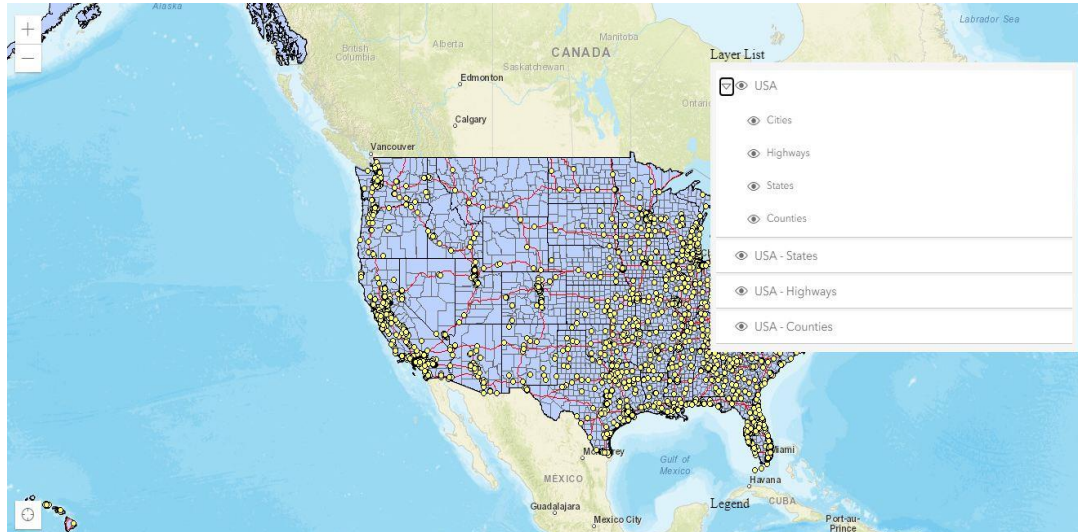


Figure 21: Layer list code for displaying the layers mentioned in source code.

Layer List code is used for appending the layers to base map mentioned in source code. The Layer-List widget provide a way to show a list of layers, and switch on/off their visibility. The List-Item API provide admission to each layer's properties, allows the developer to arrange actions related to the layer, and allows the developer to add content to the item related to the layer.

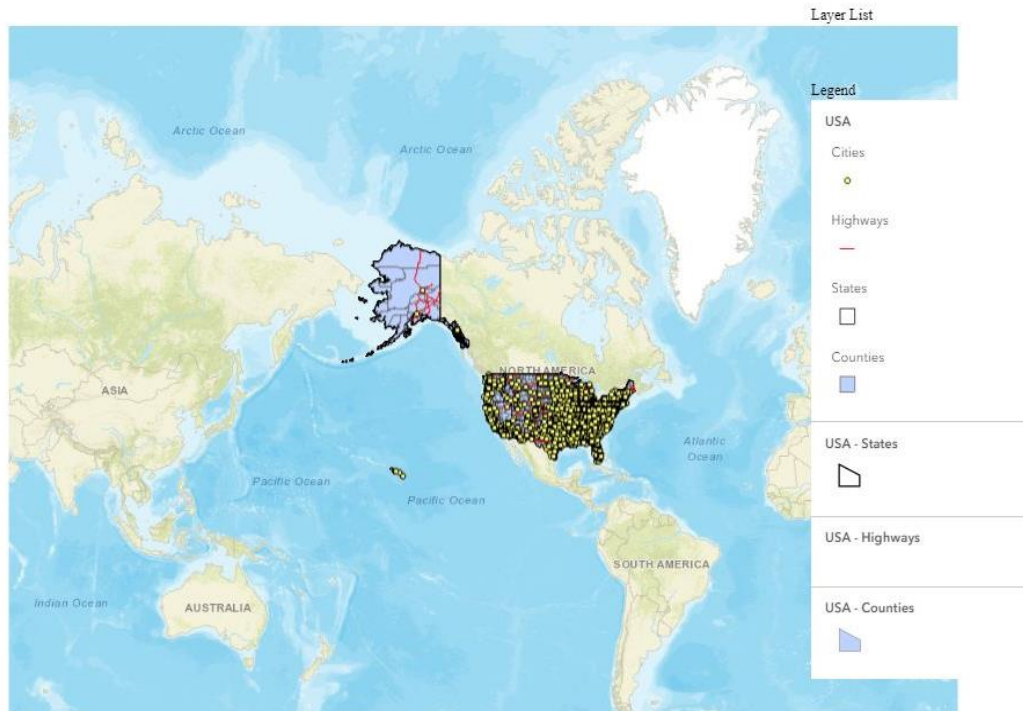


Figure 22: Legend code for displaying the features information.

Legend code is used for mentioning the information about features. The Legend widget will display labels and symbols for the layers in a map. Labels and their matching symbols depend on the values set in the renderer of the layer. The legend will only show layers and sub-layers that are detectable in the view.

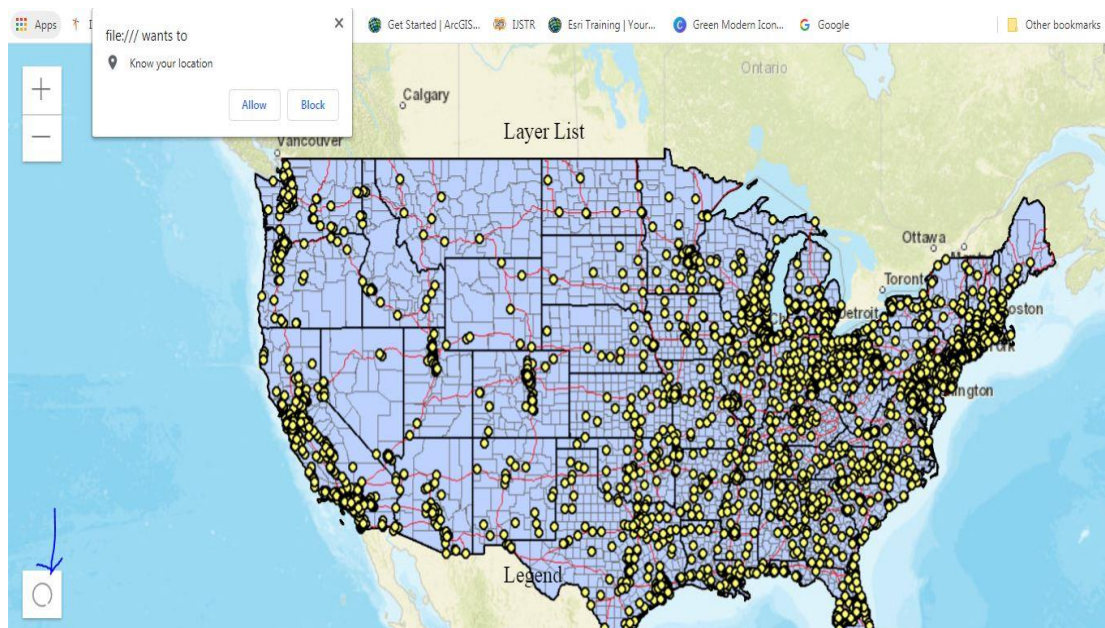


Figure 23: Locate code for navigating the base map to current location.

Locate is used for navigating to the existing location of user. It provides a simple widget that navigates the view to the user's current location. The view rotate according to the route where the tracked device is bearing towards.

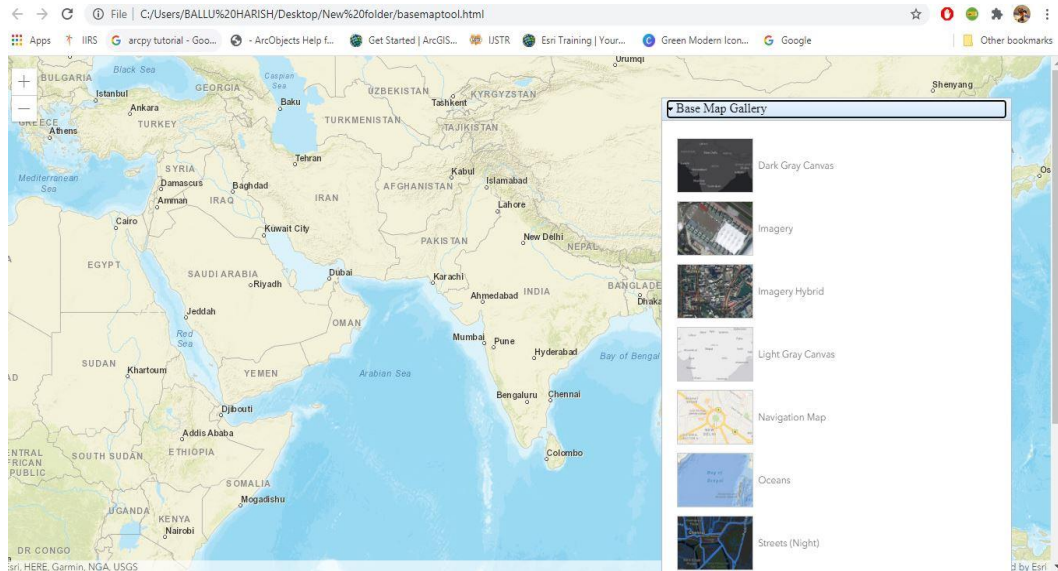


Figure 24: Base Map Gallery.

It will display all the maps at a time we can select any of them. By default Eleven different types of maps are available we can choose any of the map from them. The Base map Gallery is available under “Dojo” technique.

Whenever the form gets loaded by default the BaseMapGallery will be under false mode, by clicking on the Dojo technique we can see all the available maps.

14. Procedure for publishing the data in server: While publishing Raster data we choose Tile package, in case of vector we select publishing a service.

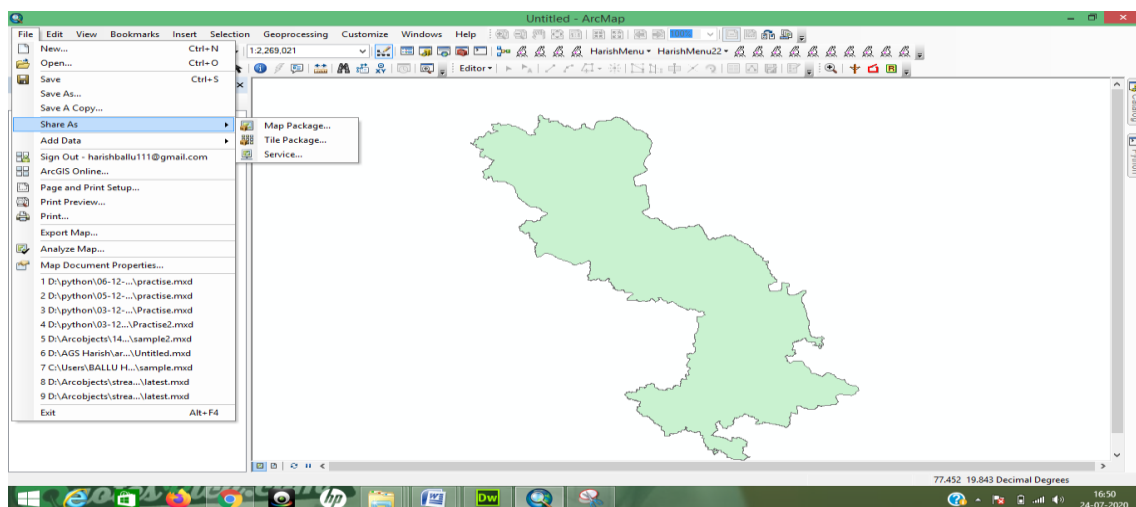


Figure 25: Publishing vector data as service.

After opening the vector data/Raster data, selecting the share as option for publishing the data.(For Raster data select Tile package, For vector data select service)

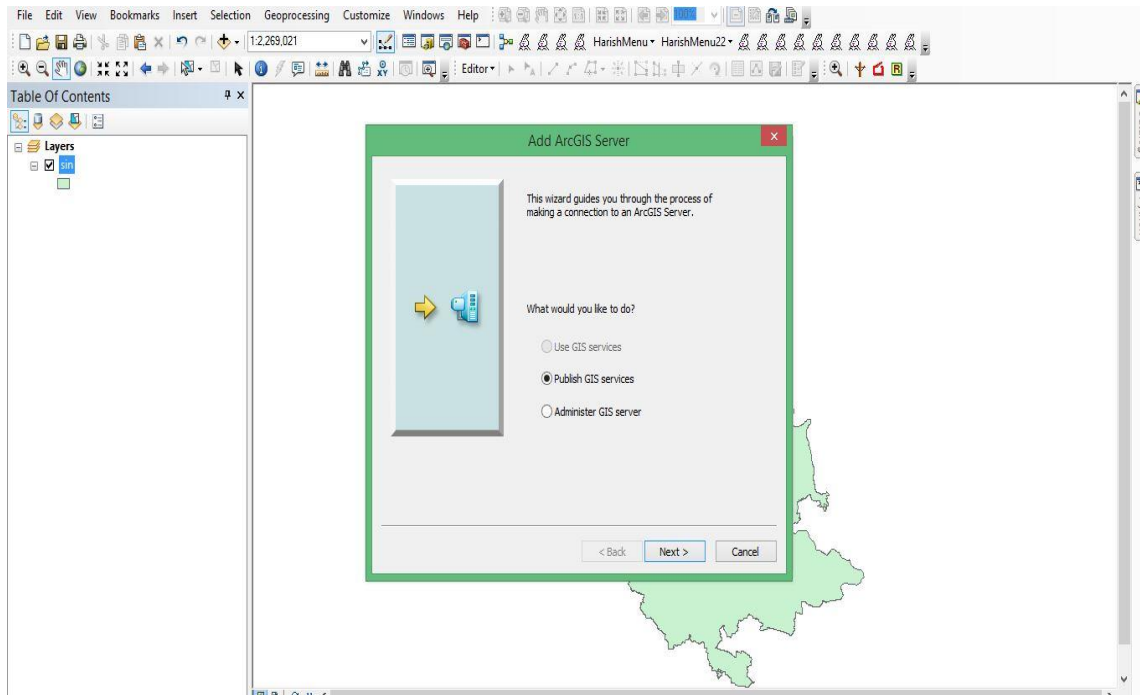


Figure 26: Selecting publishing GIS service.

By selecting the above option we are making the server ready to accept the published data.

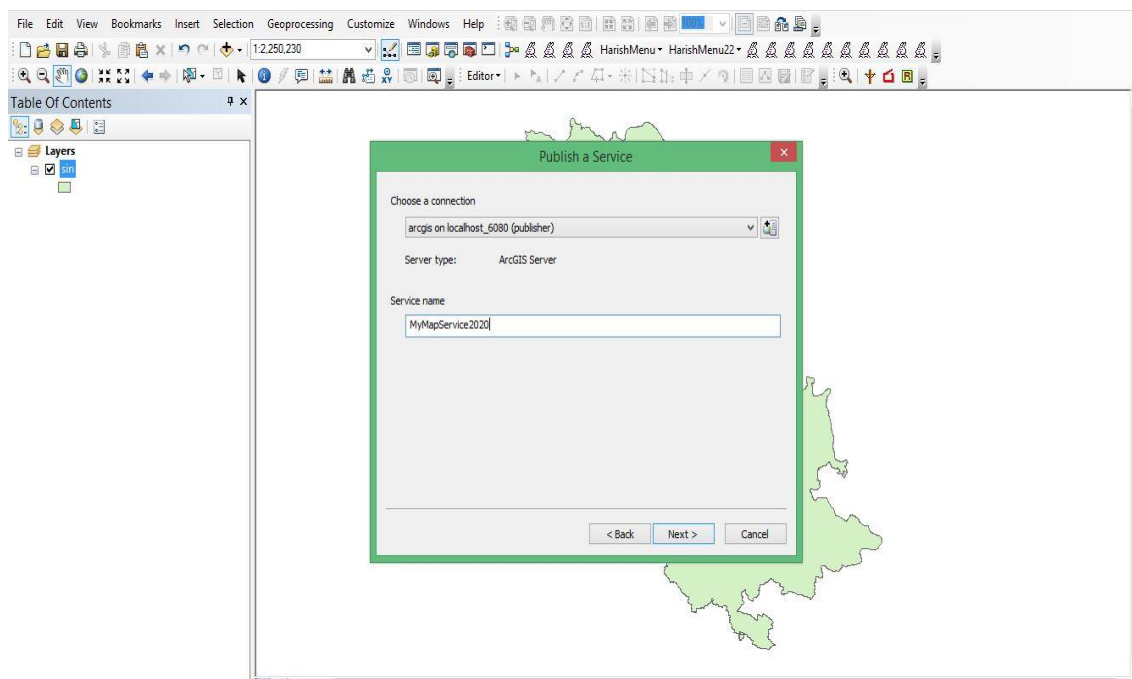


Figure 27: Selecting local/global server.

Here in this case we are selecting the server either local/global. If it is local the data gets published in our local system else the data gets published in Arc-GIS online server.

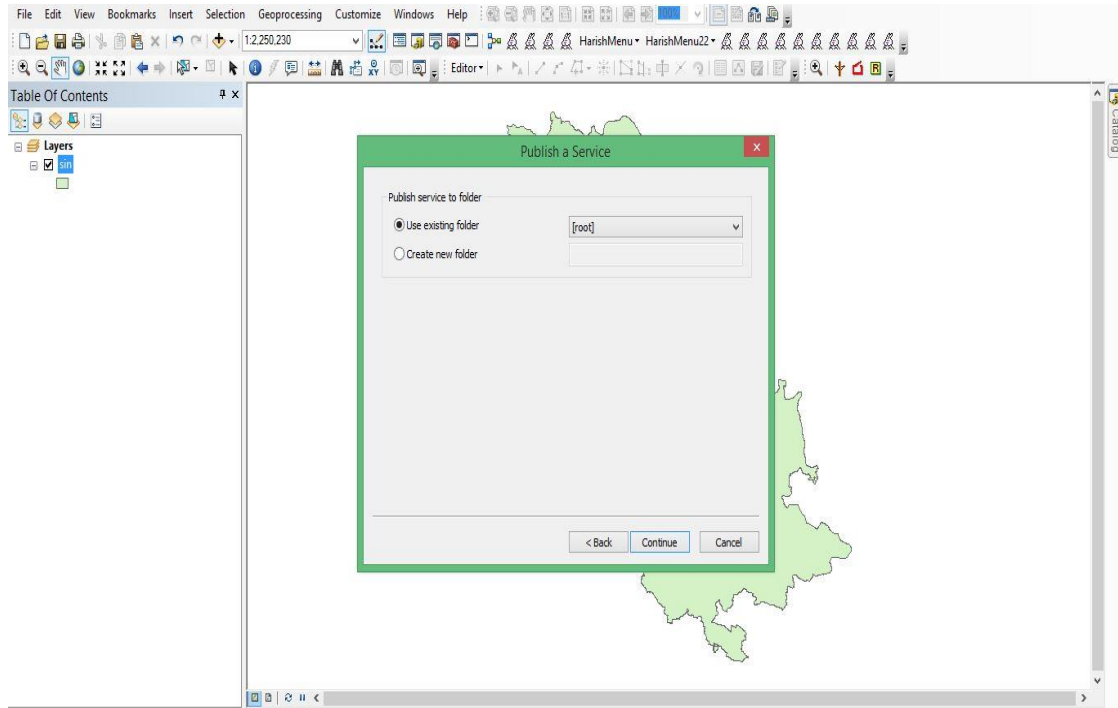


Figure 28: Choosing the folder for publishing data.

Here we are choosing the folder so that the data once getting published it will be saved in that folder. Here the data is published in root folder.

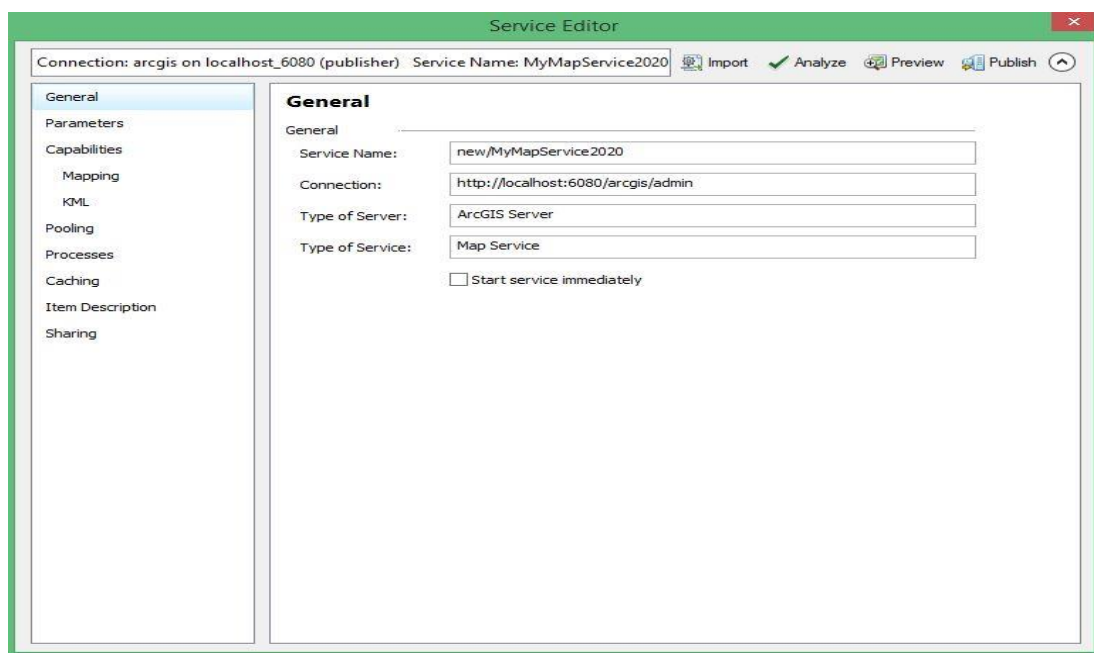


Figure29: Local server URL is known here in the connection option.

In the above figure we come across various options General tab gives basic information about the publishing data. Similarly parameters tab gives about number of records returned by user. Capabilities allow us to select various services. Cache gives information about the size of the data which is going to be published. Item description allows us to give summary and tags for the data.

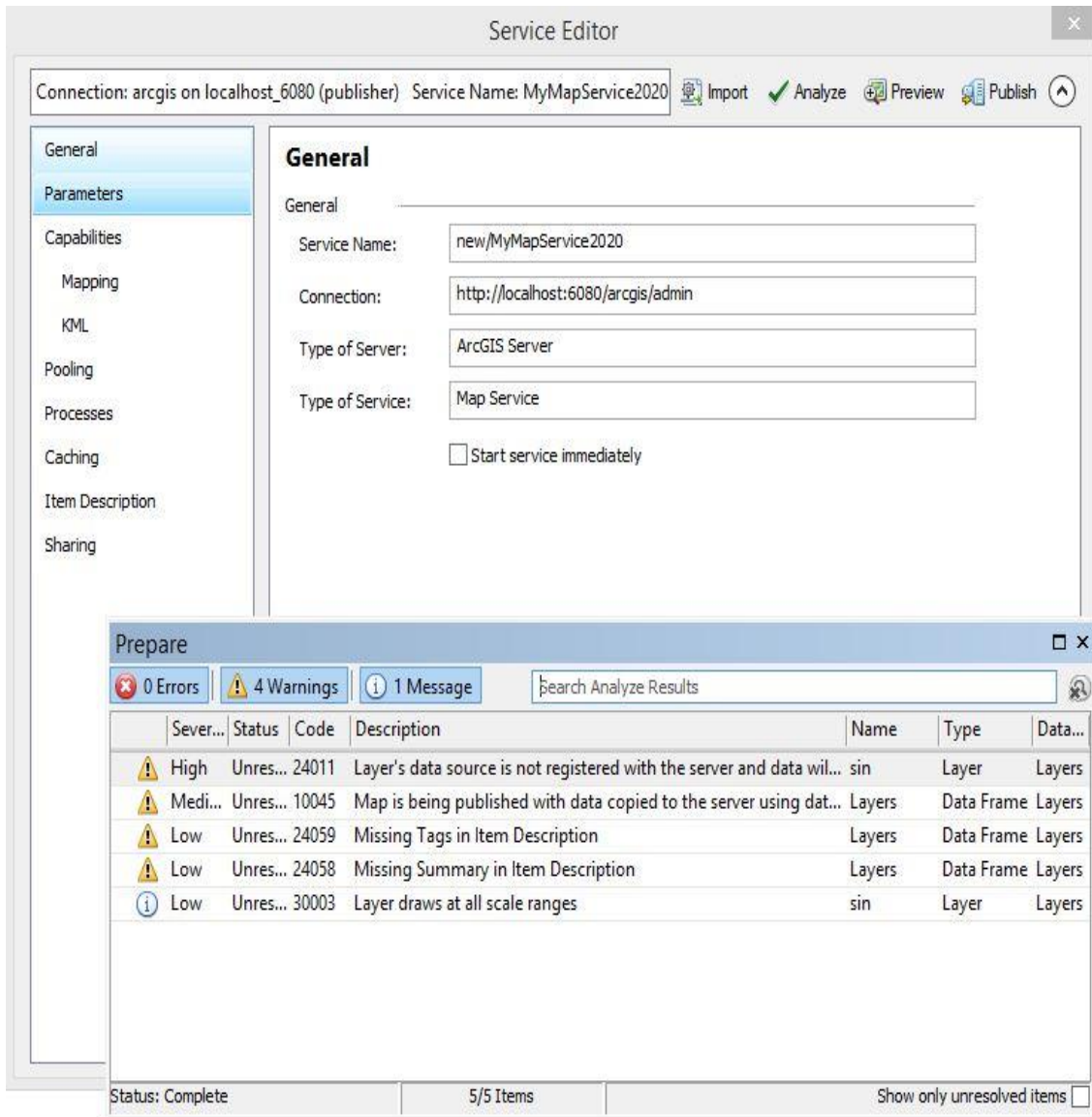


Figure 30: Validating the data which is ready to publish.

In the above figure we are validating the data which is going to be published in the server either it is following the criteria of server publishing or not.

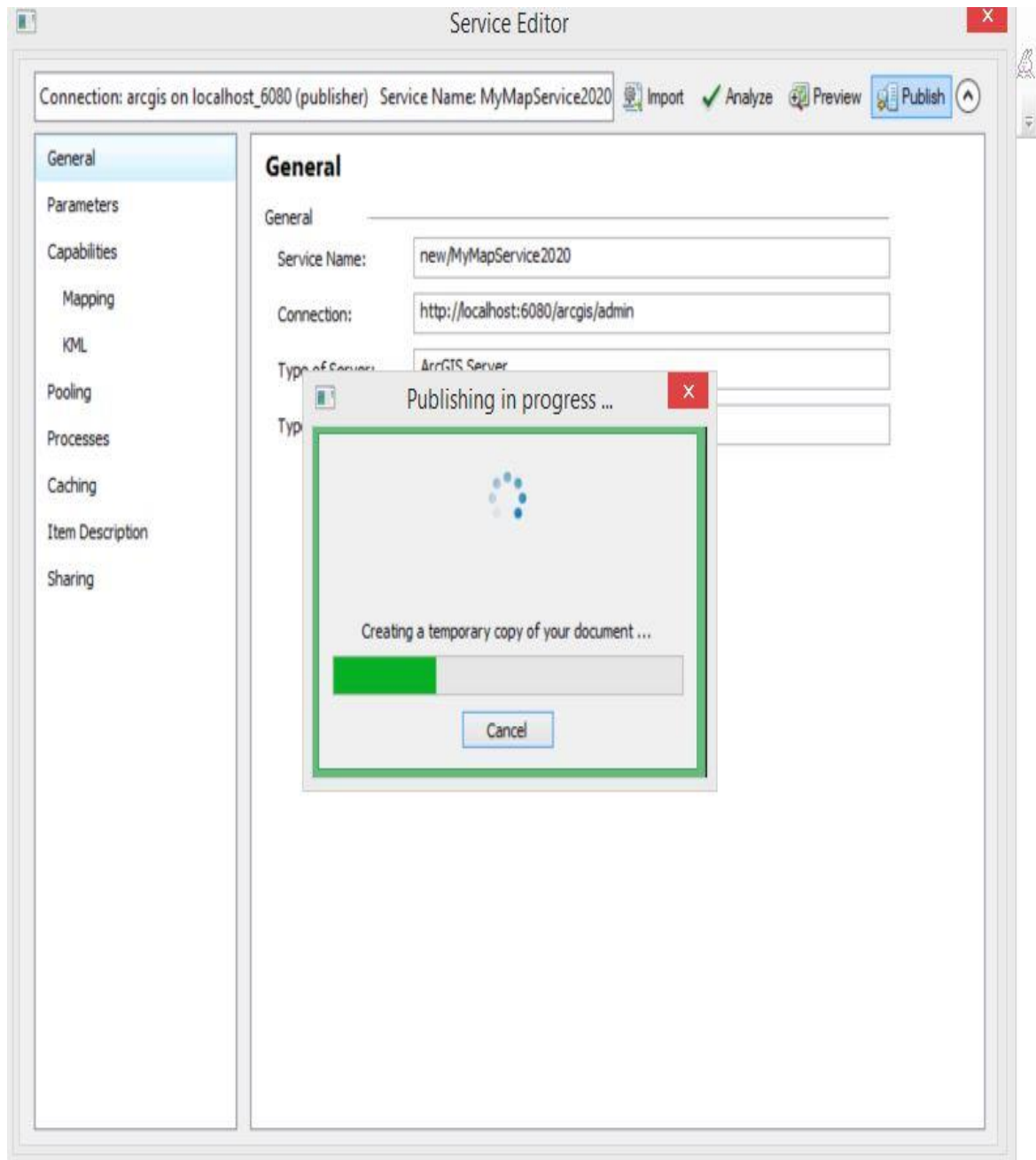


Figure 31: Successful publishing of Geo-spatial data.

Once the data is error free the data gets published in server. Once the programme becomes error free the data gets published. Regarding the errors in programme they will get displayed in red mark. By reading the errors they need to be rectified by making the corrections.

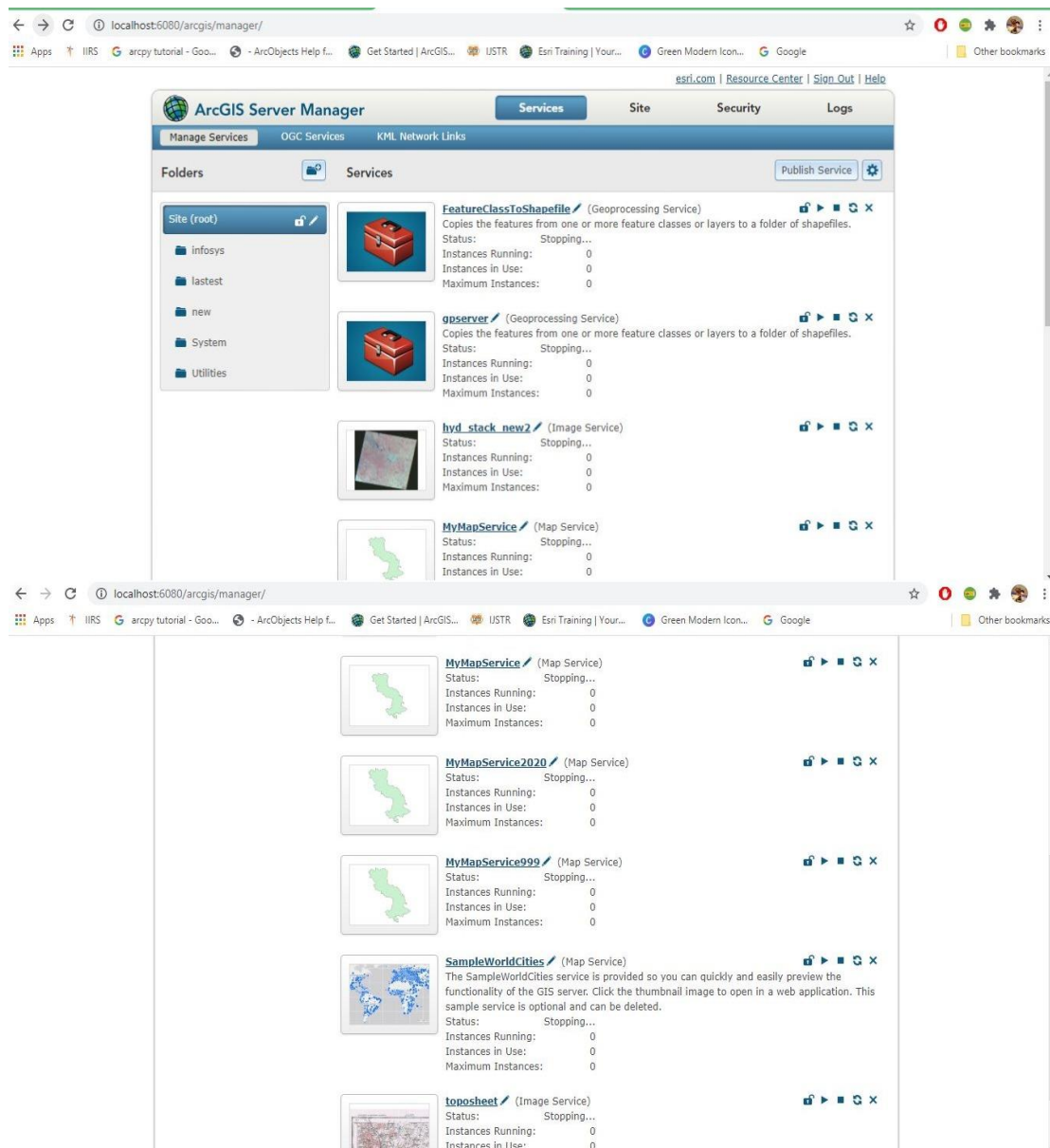


Figure 32: List of data published in server.

The above figure gives the detail information about the services which are published in server.

Arc-GIS server details:

To view the published data go through

Url: <http://localhost:6080/arcgis/manager/index.html> and enter

Username: siteadmin

Password: siteadmin

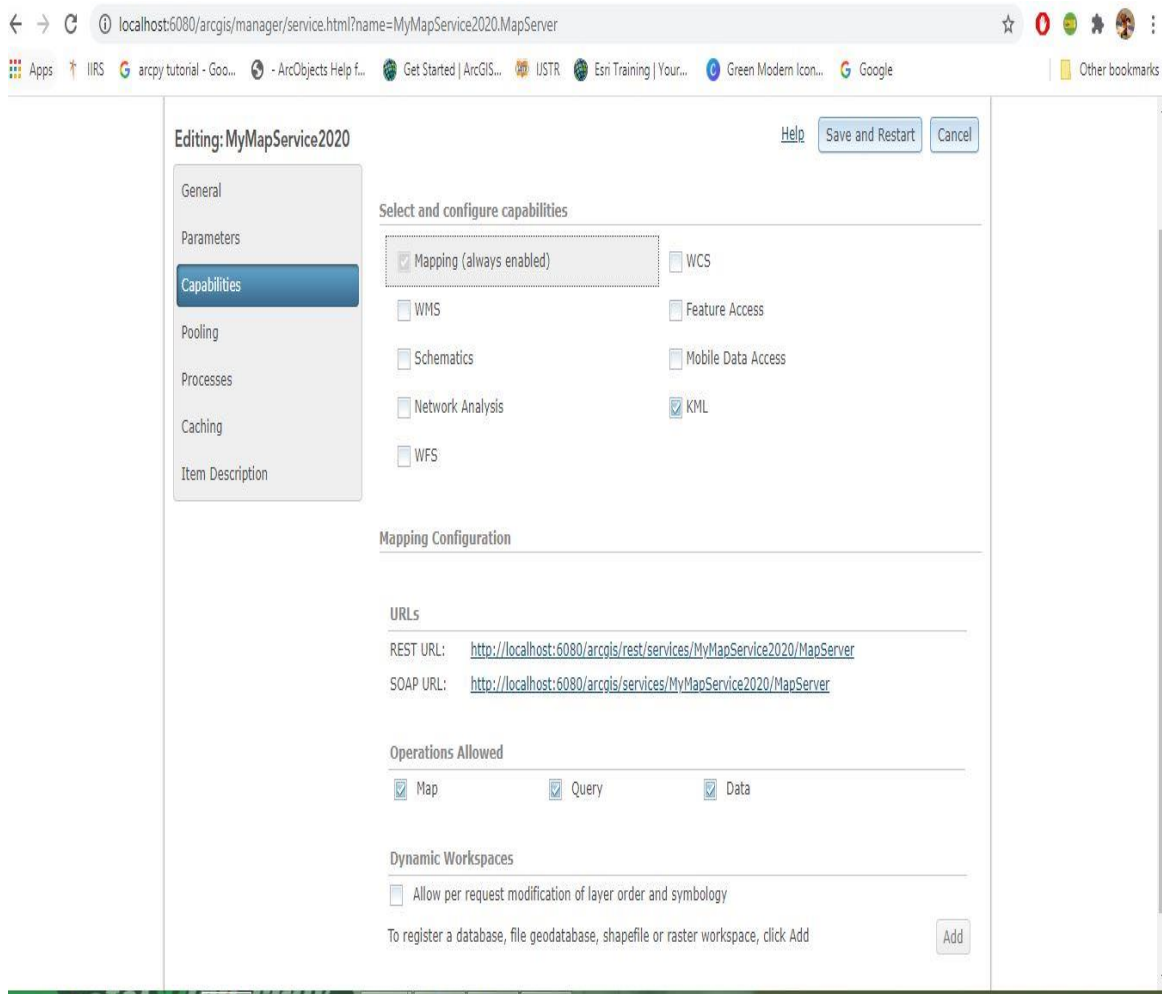


Figure 33: Url's of service can be known by above figure.

To share the data to other users we need to know the Url of the service. For that we move to capabilities tab and we can find its Url. By sharing the Url to others our data can be accessed.

The Url of above data published is

“<http://localhost:6080/arcgis/services/MyMapService2020/MapServer>“

15. Publishing of panchromatic data a part of Hyderabad region:

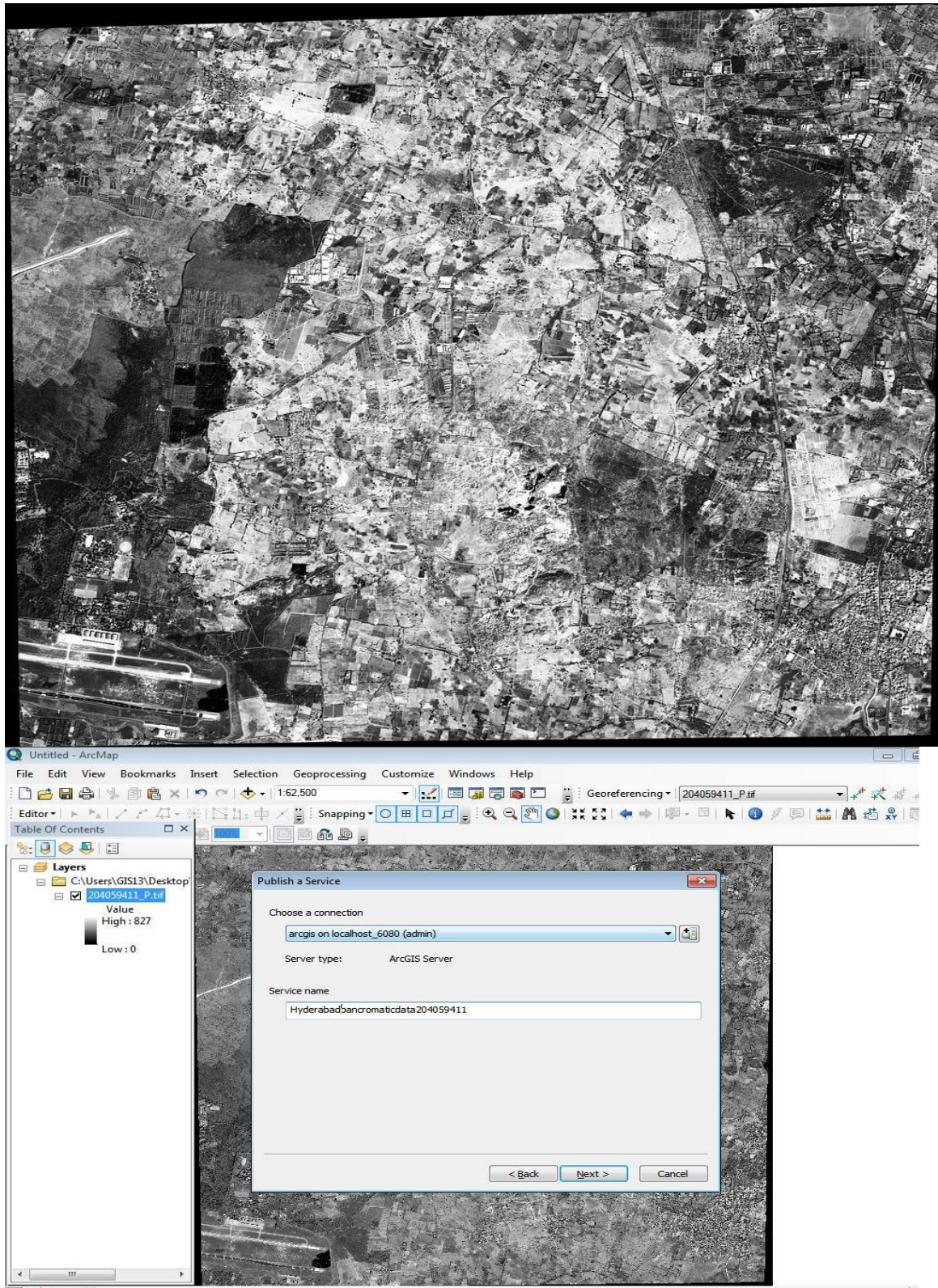


Figure 34: Part of Hyderabad regions high resolution data is selected for publishing in Arc-GIS server

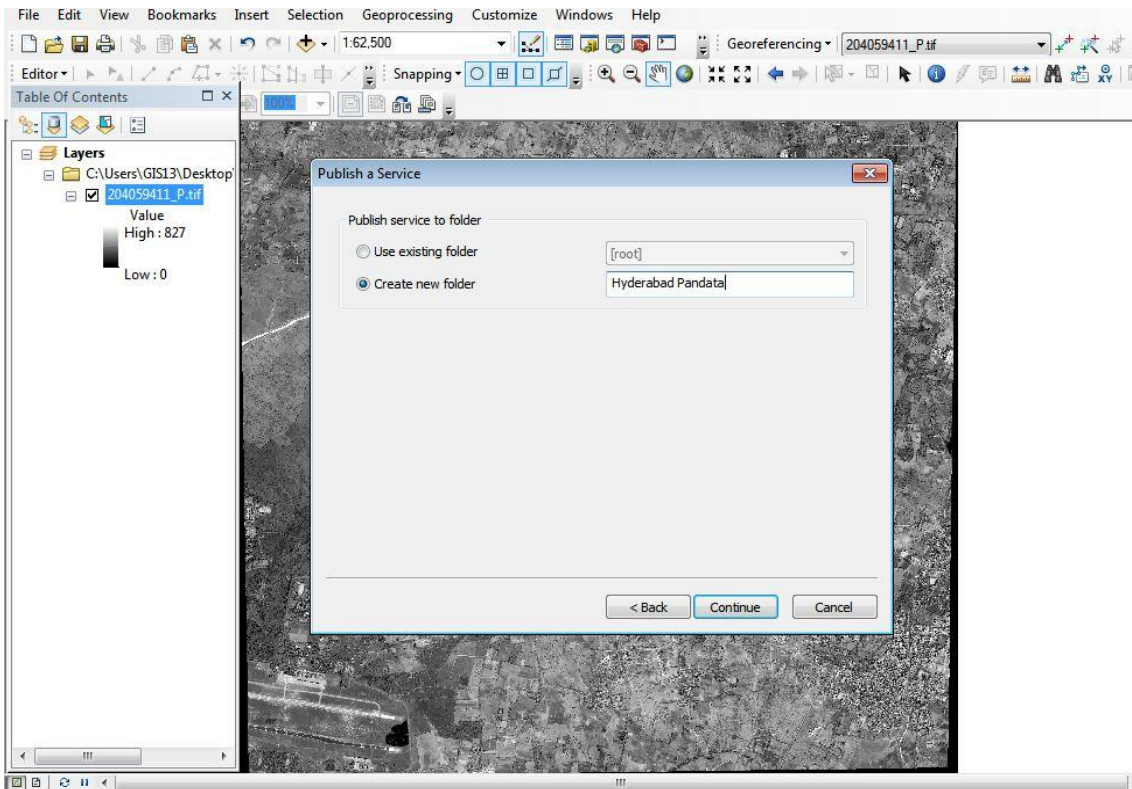


Figure 35: High resolution satellite data is going to be published under New folder named as Hyderabad Pandata in Arc-GIS server

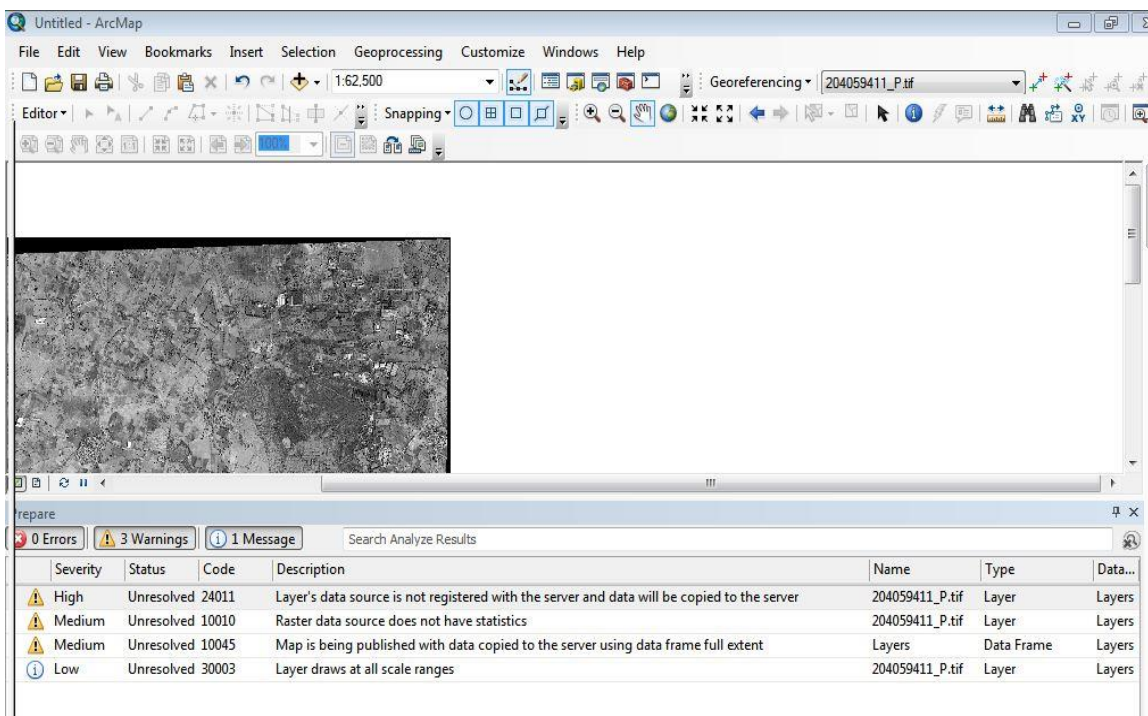


Figure 36: Checking for Errors in publishing of data

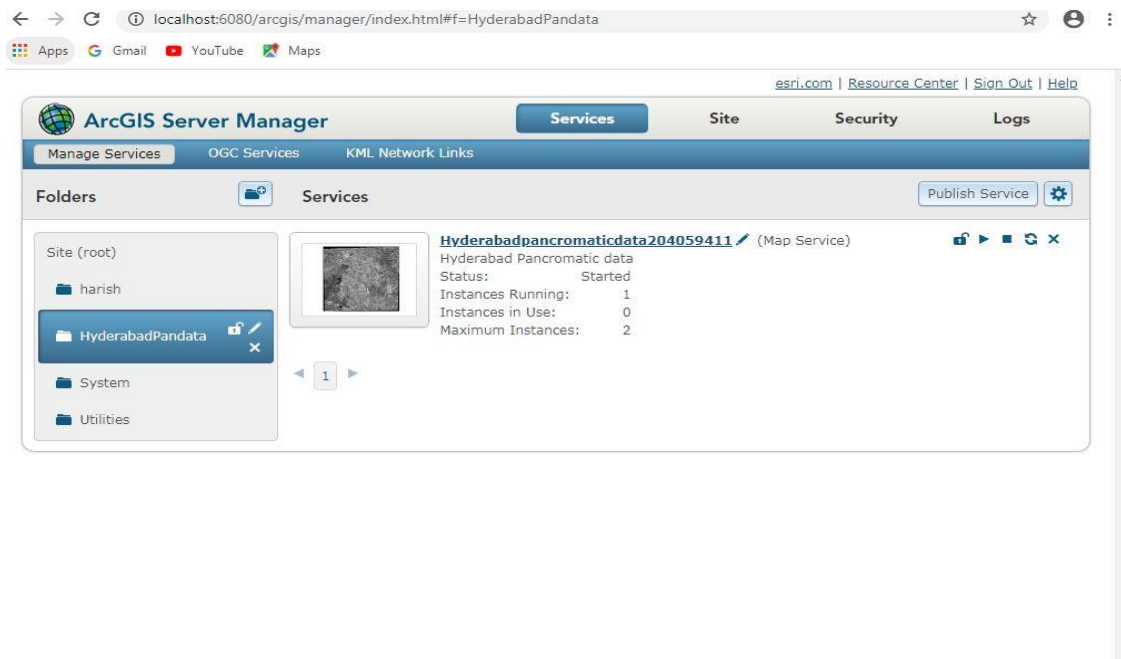


Figure 37: Publishing of High resolution satellite data is attained successfully

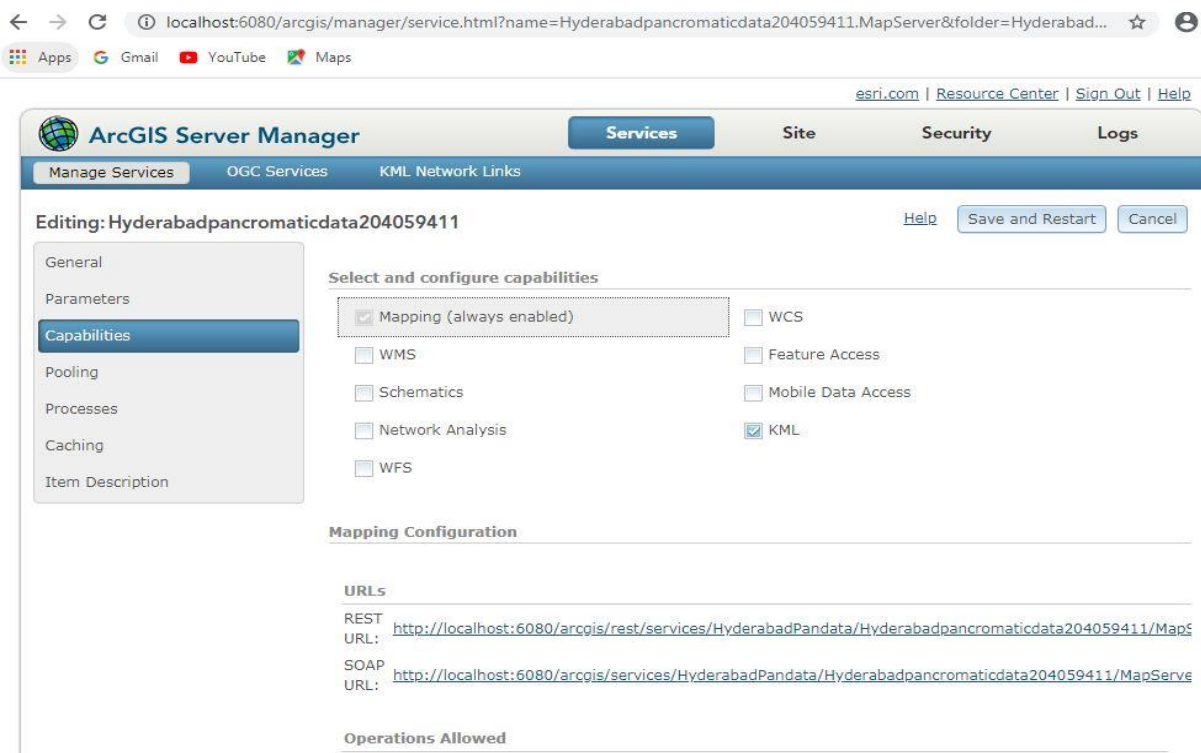


Figure 38: URL's of High resolution satellite data published in local server

The url of above data published is

<http://localhost:6080/arcgis/services/HyderabadPandata/Hyderabadpancromaticdata204059411/MapServer>

To share the data to other users we need to know the Url of the service. For that we move to capabilities tab and we can find its Url. By sharing the Url to others our data can be accessed.

16. Arc-GIS server details: To view the published data go through

url: <http://localhost:6080/arcgis/manager/index.html> and enter

Username: siteadmin

Password: siteadmin

17. Project outcomes

- A Geo Spatial database with a standard projection and a database on the Arc GIS server hub for accessing Geo Spatial data and performing customization tasks utilizing a variety of Java Script API services.
- A pop-up template is used to display specific features' details based on the zoom level.
- Validation of Geospatial data is important criteria once it is success, publishing in Arc-GIS server Environment can be attained.

18. Conclusions

- The maps that can build with **Esri JavaScript API** are changing the way that we recognize world and the way that we relate with it. Its dominant API helps keep us busy for the challenges and opportunities in the 21st century, both in interactive 2D and 3D environment.
- Just like any API, the Esri JavaScript API offers ways to make own custom applications in a diversity of ways. Every day, the Esri JavaScript API allows us to connect with our neighbourhood and our place that we're living in sole, inventive and influential ways.
- From Esri JavaScript API-3 which gave 2D webmaps to Esri JavaScript 4 which now gives the chance to build interactive 3D web-scenes has revolutionize the skill of mapping online.
- With the Esri JavaScript API, we can better notify for decision-making and represent priority from our own spatial data. We can express and claim our own potential giving our own sense of place that we're living in.

REFERENCES

- [1] Goodchild, Michael F “Crowdsourcing geographic information for disaster response: a research frontier” Pages 231-241.
- [2] Goodchild, M.F. 2007. “Citizens as sensors: the world of volunteered geography. *GeoJournal*”, 69(4): 211–221
- [3] Scharl, A. and Tochtermann, K. 2007. “The geospatial web: how geobrowsers, social software, and the web 2.0 are shaping the network society”.
- [4] National Research Council. 2007. “Successful response starts with a map: improving geospatial support for disaster management”.

- [5] LIU Laixing, LI Deren, SHAO Zhenfeng,2008” RESEARCH ON GEOSPATIAL INFORMATION SHARING PLATFORM BASED ON ARCGIS SERVER”
- [6] Taranjot Singh Bhatia, Harpinder Singh, P.K Litoria, ,Brijendra Pateriya,2019” Web GIS Development using Portal for ArcGIS, ArcGIS Server and Web AppBuilder for ArcGIS”
- [7] Ramesh Babu R , G K Viswanathan, Tina Mary Francis,2011” Extending ArcGIS Server capabilities through customization - A technology perspective”
- [8] David J. Maguire,2008”ArcGIS: General Purpose GIS Software System”
- [9] Ibrahim Djamaluddina, Yasuhiro Mitania , Tetsukazu Yaharab, 2012 “Development of GIS Server Application for Sharing and Utilizing Biodiversity Survey Database”